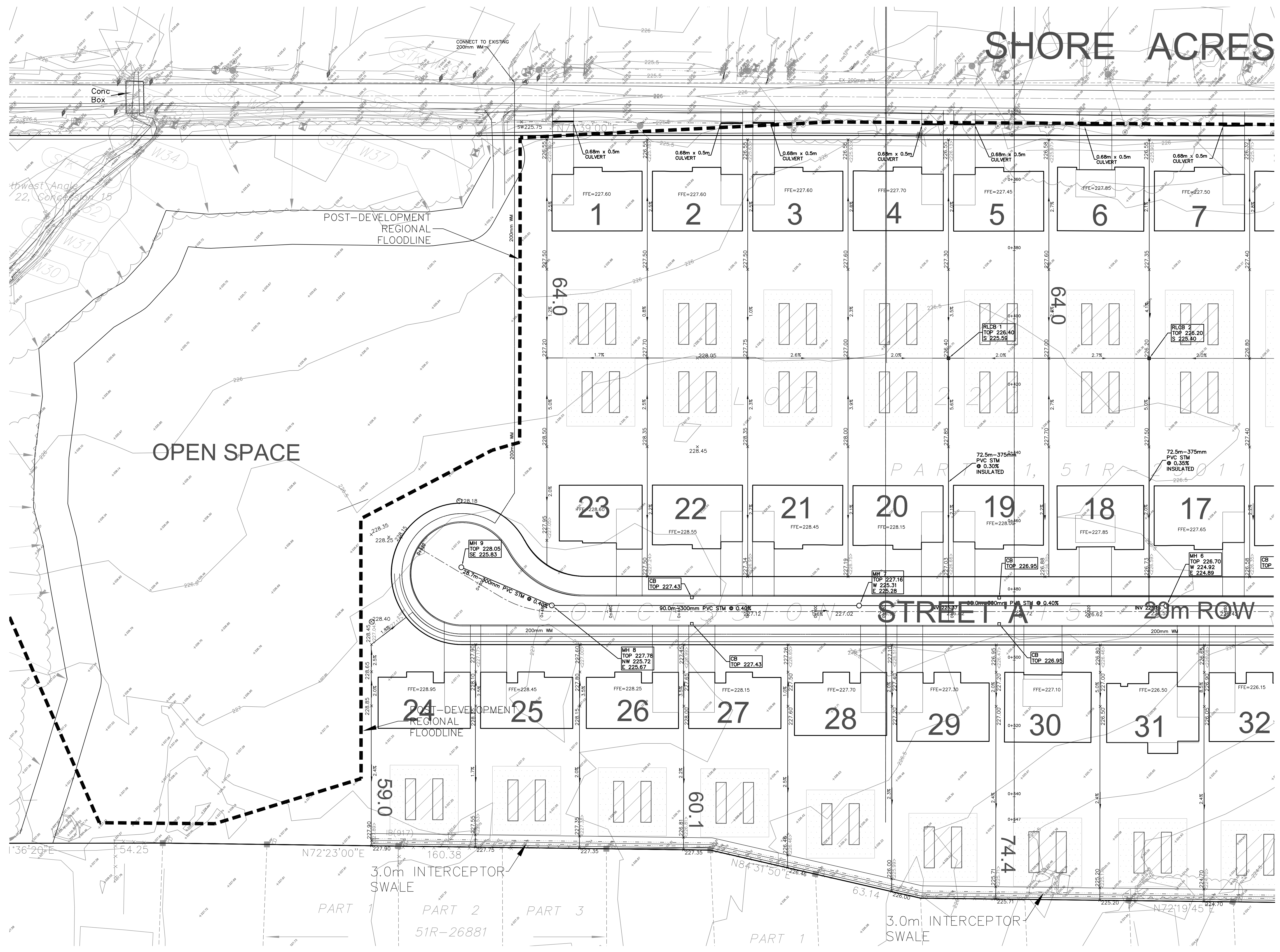



# SHORE ACRES



No.	Date	By	REVISIONS


**a.m.candaras associates inc.**  
 consulting engineers  
 8551 Weston rd., suite 203  
 Woodbridge ont, L4L 9R4  
 905-850-8020 Fax 905-850-8099  
 Email: civil@amca.com

**PROPOSED RESIDENTIAL SUBDIVISION**

**TOWN OF INNISFIL (GILFORD) SIMCOE COUNTY**

**SITE SERVICING, GRADING AND STORMWATER MANAGEMENT**

SCALE: 1:500	DATE: SEPT 2019	PROJ No: 1848
DRAWN: N.A.C.	CHK'D: A.M.C.	PLAN No.
DESIGNED: A.M.C.	SHEET 1 OF 5	<b>G1</b>