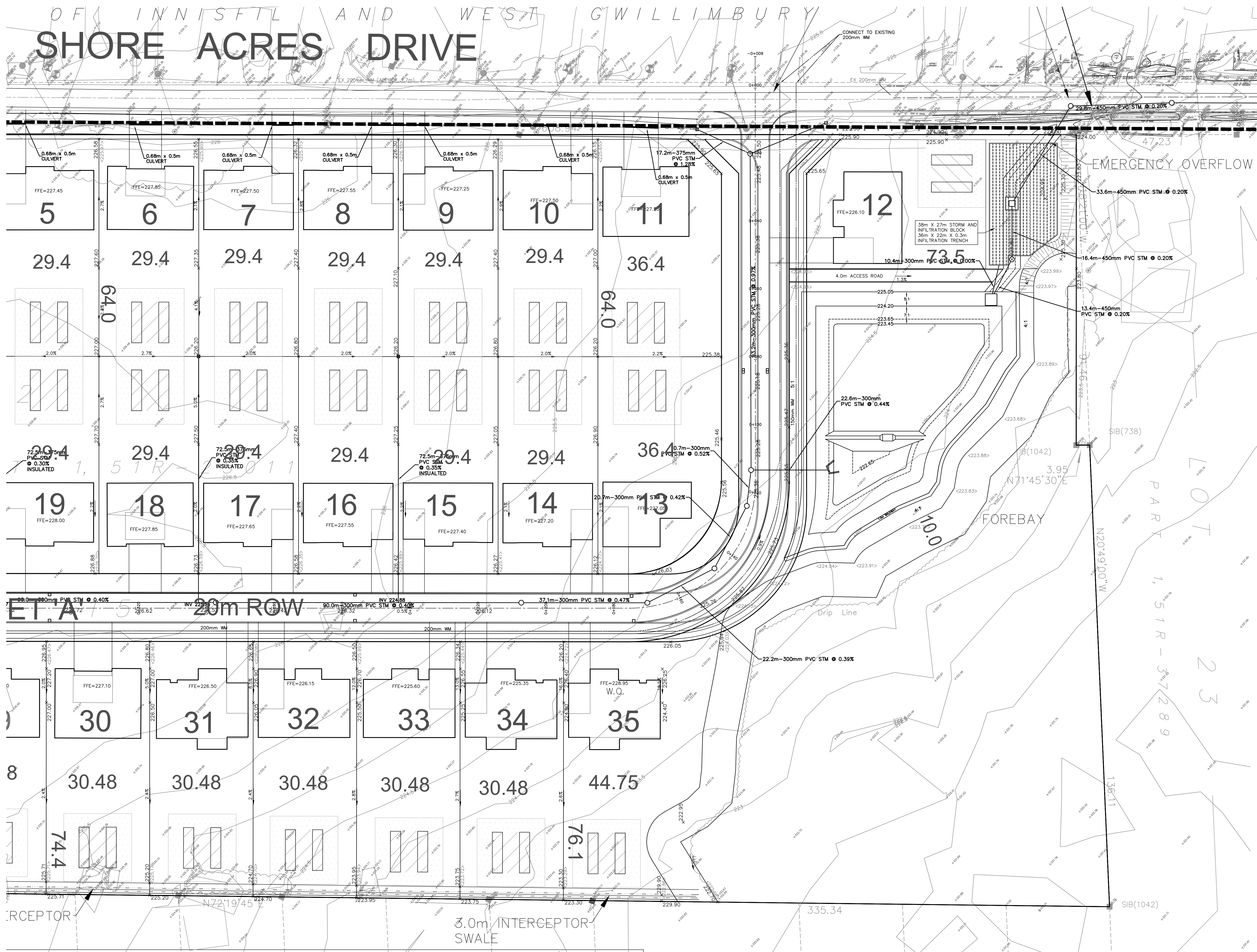



SHORE ACRES DRIVE



No.	Date	By	REVISIONS


a.m.candaras associates inc.
 consulting engineers
 8551 Weston rd., suite 203
 Woodbridge ont, L4L 9R4
 905-850-8020 Fax 905-850-8099
 Email: civil@amca.com

PROPOSED RESIDENTIAL SUBDIVISION
TOWN OF INNISFIL (GILFORD) SIMCOE COUNTY
SITE SERVICING, GRADING AND STORMWATER MANAGEMENT

SCALE: 1:500	DATE: SEPT 2019	PRJ No: 1848
DRAWN: N.A.C.	CHK'D: A.M.C.	PLAN No.
DESIGNED: A.M.C.	SHEET 2 OF 5	G2