

# what's an MDP?



## Success starts with a plan.

Think of a Municipal Development Plan as a “**master plan**”. It is a document which outlines a **long-range vision** for the future of a community, whether it be a city, town or rural municipality.

The City of Medicine Hat is undertaking a comprehensive update to its guiding vision, the Municipal Development Plan. This initiative, **myMH**, will result in a new long-range citywide plan to be adopted in 2019, putting in place strong and visionary policies to help create a more prosperous, livable and sustainable city.

## Why do we need it?

By law\*, every community in Alberta must have an MDP, and due to complex changes which happen in communities over time, such plans need regular revisioning.



## Time for an update.

The City's current Municipal Development Plan was adopted back in 2012. Medicine Hat has changed significantly since then, so it is time for a fresh outlook.

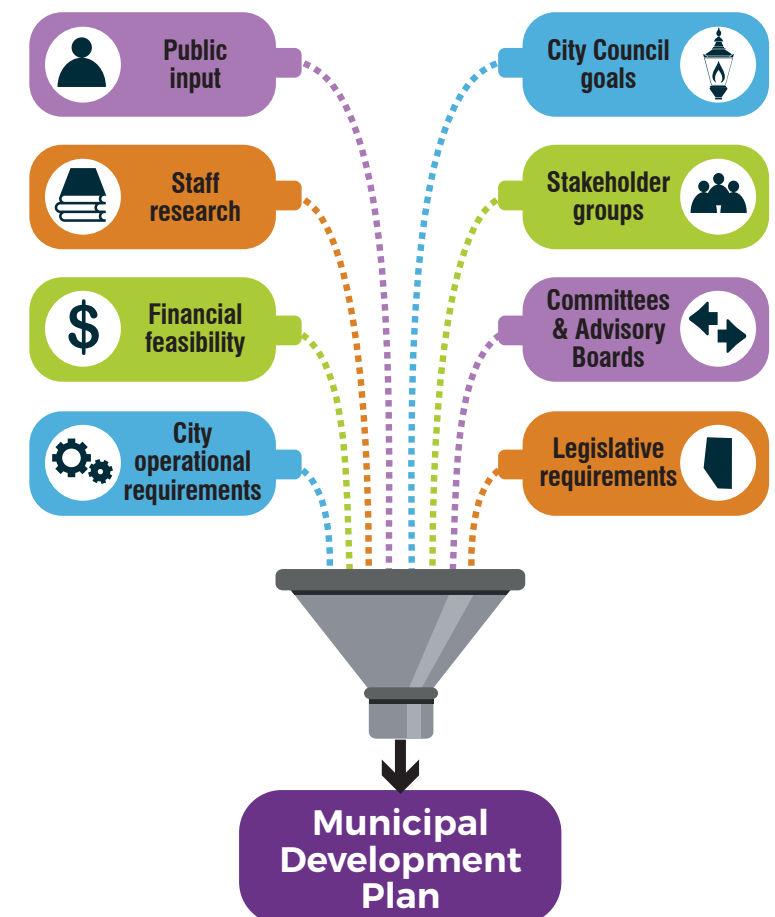
# how do you fit in?



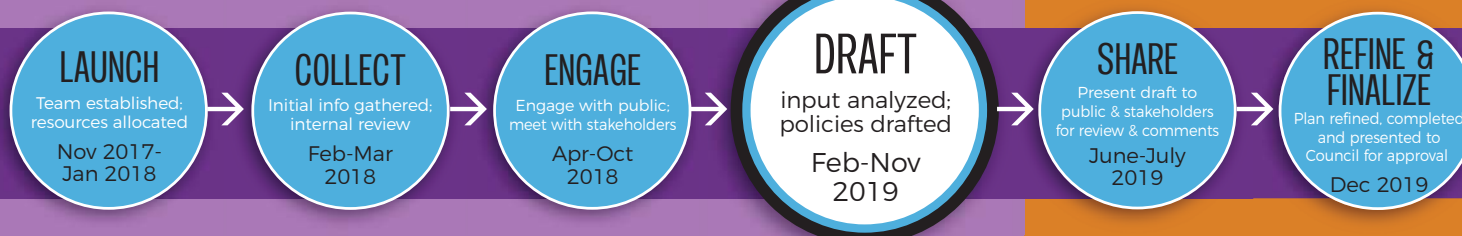
## Public input is helping to create this plan.

Last year, the team reached out to the general community and stakeholders for their thoughts. Now those values and ideas, along with other important considerations, are being incorporated into the **myMH** plan.

## Ingredients of an MDP



## PROJECT TIMELINE



\*Municipal Government Act

watch for updates at  
[www.mymh.city](http://www.mymh.city)

**mymh**  
MEDICINE HAT MASTER PLAN

 **Medicine Hat**  
The Gas City  
PLANNING & DEVELOPMENT SERVICES



# what we heard...

## real comments from Hatters

provided during 2018  
myMH public engagement.

Sources: Public survey, "I imagine" notes, and  
community-lead kitchen table conversations.

arts & culture  
are a sign  
of a vibrant  
community.

having a vibrant  
city is the most  
relevant to me.

more walkable  
and bikeable.

move from  
car-centric city to  
active transportation  
city.

health;  
physical activity.

low income  
housing for  
seniors.

people want to see  
Medicine Hat shed  
its historical bias  
toward awful suburbs,  
automobiles, and  
big business.

preserve  
& promote  
heritage  
features

pull us out of  
the seventies.  
be progressive.

suburbs  
are a dying  
phenomenon.

compact  
urban area.  
no more  
sprawl!

I don't think  
urban sprawl  
is something  
we need to be  
concerned with.

do correct  
redevelopment  
of older areas.

basic needs of  
food, shelter,  
employment  
out-rank a hopping  
downtown scene.

move the rail yard  
out of downtown  
and start fresh.

develop the  
river front.

city centre goals  
are ridiculous;  
who cares where  
people live within  
the city limits.

economic  
development  
means jobs.

be open for  
business!

focus more  
on tourism.

small business  
support.

start advertising  
Medicine Hat  
to the world.

diversification  
of industry  
and business  
is critical.

tourism industry  
that capitalizes  
on Medicine Hat's  
assets.

more options  
for education.

transit needs to  
be more, not less.

transit is not  
important, and  
costs way too much.

transit needs overhaul.  
use smaller buses  
more frequently.

be fiscally  
responsible.

where are  
all the \$\$  
coming from?

listen to the taxpayers  
and stop supporting  
the top 1% of the city.

a vibrant city  
understands  
diversity and  
inclusion.

senior amenities and  
services should be  
balanced with amenities  
to attract millennials,  
to grow the population.

aboriginal  
recognition.

engage as many  
people as possible  
in this process

collaboration  
between city  
and MH college.

more supporting  
all socioeconomic  
levels.

safety & wellness  
are the most  
relevant to me.

ensure the plan  
is inclusive to all.

consider needs of  
most vulnerable  
citizens.

a pedestrian-  
focused  
downtown.

need to focus  
on downtown  
redevelopment,  
connection to  
river and more  
residential.

getting small  
business to stay  
in downtown.

moving the train  
tracks: too expensive  
with no benefit.

river valley is  
beautiful but  
under utilized.

more  
downtown  
housing.

climate change  
mitigation and  
resilience.

clean, safe  
water is  
imperative!

I think our park  
landscapes should  
be mostly  
natural land.

increasing  
recycling.

playgrounds  
made with  
natural materials,  
less "plastic".

healthier  
communities  
have healthier  
residents.

most  
green-related  
topics are  
expensive  
to tax payers.

livability,  
walkability.  
start there.

vibrant  
and distinct  
neighbourhoods.