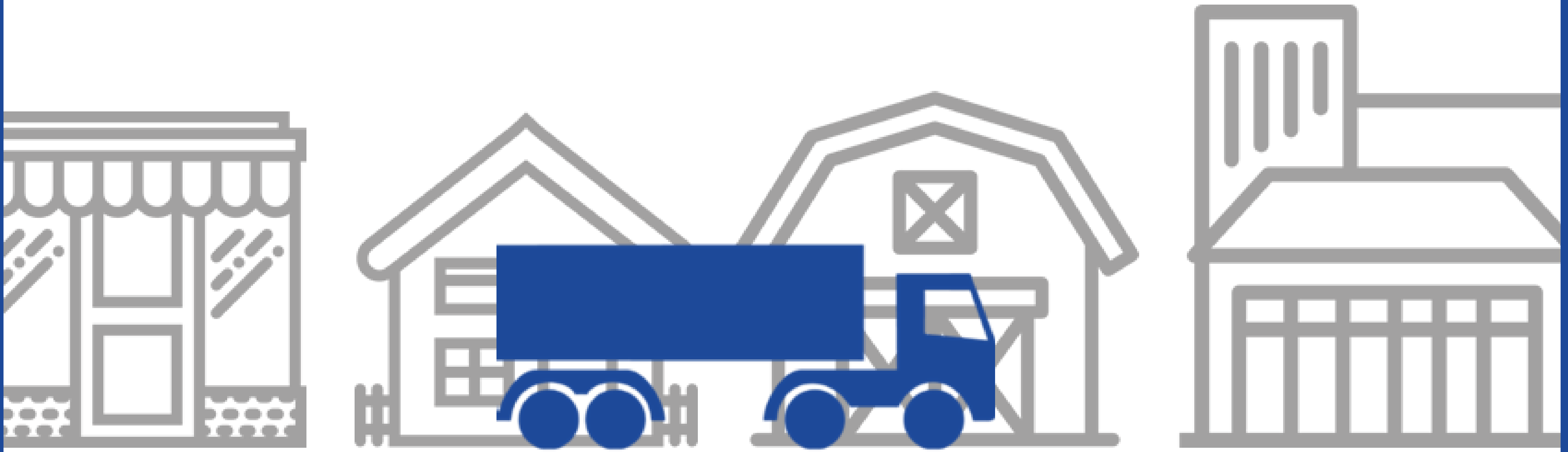


WELCOME!



TRUCKING STRATEGY

TOWN OF HALTON HILLS •
ONTARIO • CANADA

Public Open House #2

November 28th & 29th, 2017 | 6:00 – 8:00 p.m.

Maureen Van Ravens

Town Project Manager

T: 905-873-2601 Ext. 2314

E: maureenv@haltonhills.ca

Adrian Lightstone

WSP Project Manager

T: 416-644-8723

E: adrian.lightstone@wspgroup.com



ABOUT THE STUDY

STUDY PURPOSE



“Develop a trucking strategy that supports economic and employment activities, while balancing the needs of the community.”



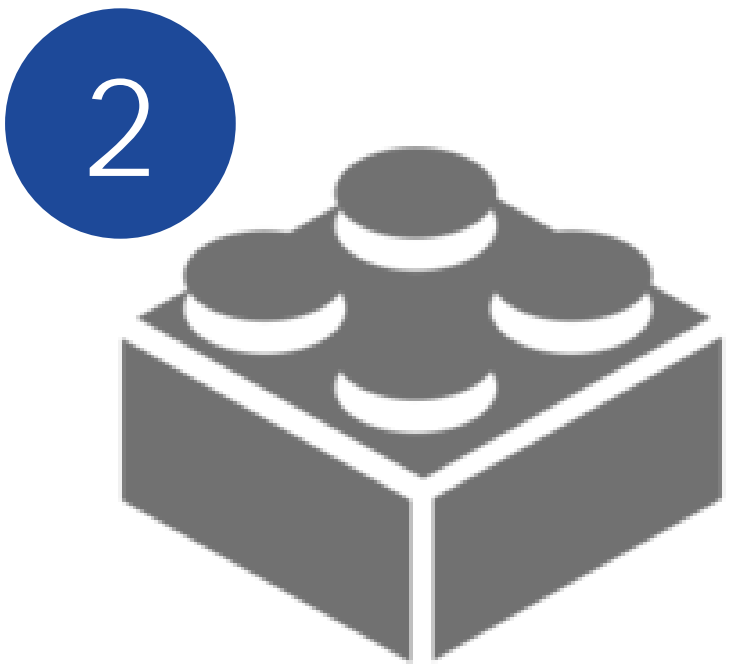
STUDY OBJECTIVES



Develop a **long-term strategy** which addresses maintenance and safety



Explore opportunities for roads to safely **accommodate all modes** of transportation



Build on the work of the Town’s TMP and Strategic Action Plan



Ensure that there is a **balanced approach to planning** which enhances quality of life

STUDY OUTCOMES



ENGINEERING

Transportation infrastructure improvements



ENFORCEMENT

A strategic plan to support enforcement of by-laws and regulations



ENGAGEMENT

A comprehensive consultation program



EDUCATION

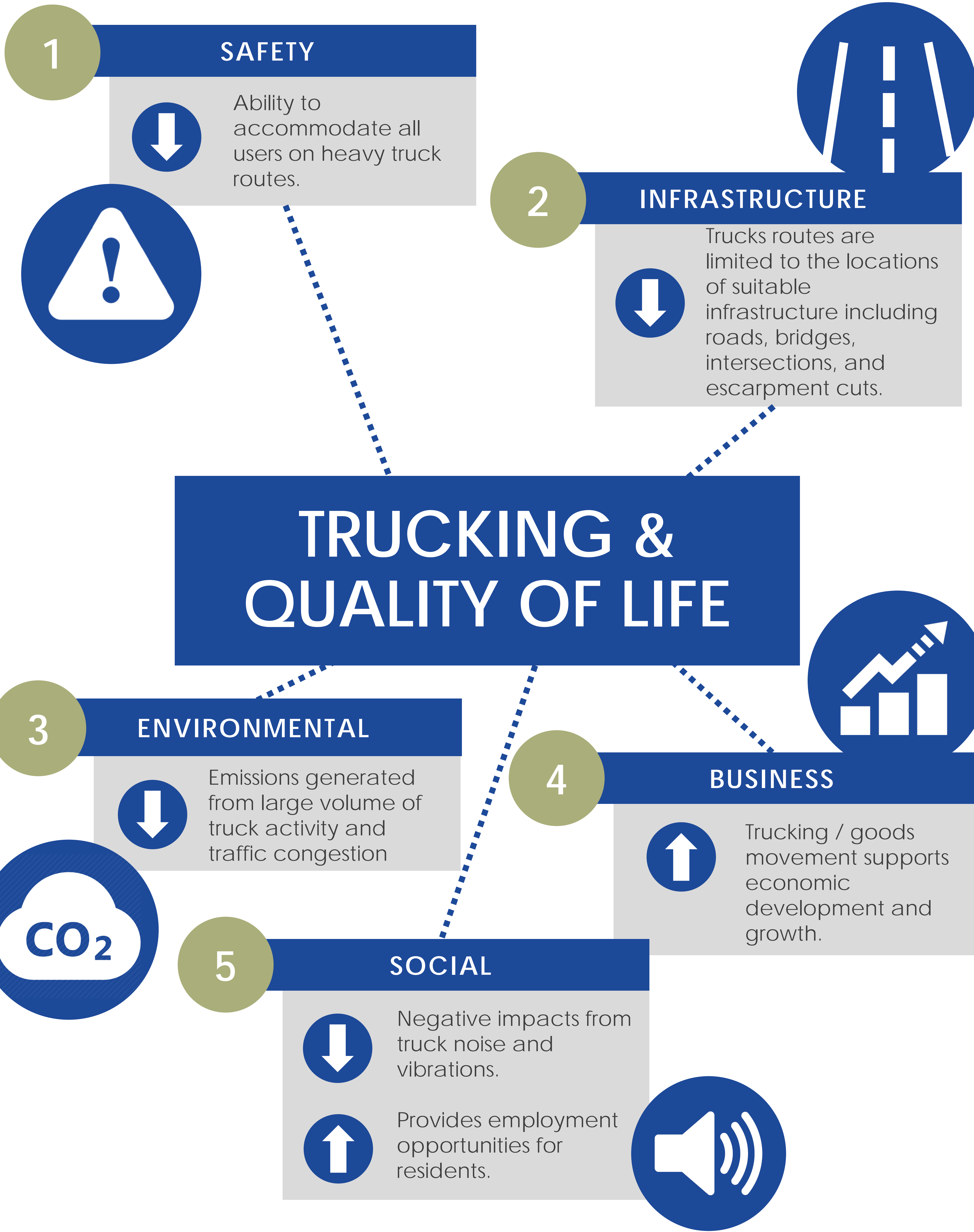
A communication strategy for various audiences



EVALUTION

Opportunities for performance and improvement monitoring

IMPACTS OF TRUCKING



STUDY PROCESS

4

Start: November 2016



UNDERSTANDING TRUCKING

5

WHAT DO THE SIGNS MEAN?

PROVINCIAL

Truck Restrictions:
All vehicles permitted

- Includes:**
- Highway 401
 - Highway 7



REGIONAL

Truck Restrictions:
All vehicles permitted
(with exceptions i.e. Winston Churchill)

- Includes:**
- Trafalgar Rd, Ninth Line, Steeles Ave, 10th Side Road, RR 25, Winston Churchill Blvd.



CONNECTING LINKS

Truck Restrictions:
All vehicles permitted

- Includes:**
- Across Queen, Young, Mill & Main Street (Acton)
 - Guelph & Main (Georgetown)



LOCAL ROADS

Truck Restrictions:
Permitted, Restricted, & Reduced Loads

- Includes:**
All Town roads



Heavy Trucks Prohibited

Heavy trucks not permitted anytime, except for local deliveries

Time-of-Day Restrictions

Heavy trucks not permitted in the evening and overnight due to sensitive land uses.

Reduced Loads

Heavy truck maximum weight restriction allows unloaded trucks to use these roads. Seasonal reduced load restrictions are used to protect roads during the spring thaw.

WHAT HAVE WE HEARD TO DATE?

Input received through first round of engagement

WHO WAS ENGAGED? AND HOW?



council



residents



businesses



technical agencies



stakeholders

Online Survey	Open House x2	Local Business Discussions	Technical Agency Workshop	Council Presentation & Interviews
Objective: •To gather input on current preferences, habits and trends.	Objective: •To engage with residents and stakeholders on opportunities, challenges and improvements •Georgetown – May 23 •Acton – May 24	Objective: •To engage with businesses to gather input on the opportunities, challenges and improvements	Objective: •To consult with agencies of decision making ability on the opportunities, challenges and potential strategies	Objective: •To gather input on the issues, opportunities and context related to trucking in Halton Hills specific to various wards
291 responses	100 attendees	5 attendees	13 attendees	Representatives from each Ward attended

KEY THEMES

The following seven (7) key themes emerged during round 1 engagement:

- 1

Safety
- 2

Noise & Vibration
- 3

Time-of-Day
- 4

Environment
- 5

Bypass
- 6

Congestion
- 7

Quality of Life

WHAT HAVE WE HEARD TO DATE?

Input received through first round of engagement

Round 1: Identifying Issues, Opportunities & Context

Objectives

- To **inform** the different audiences of the purpose & context of the study
- To **consult** with audiences with the intent to gather input on opportunities, challenges & improvements to trucking in Halton Hills

Based on our **291** survey respondents...

87%
residents

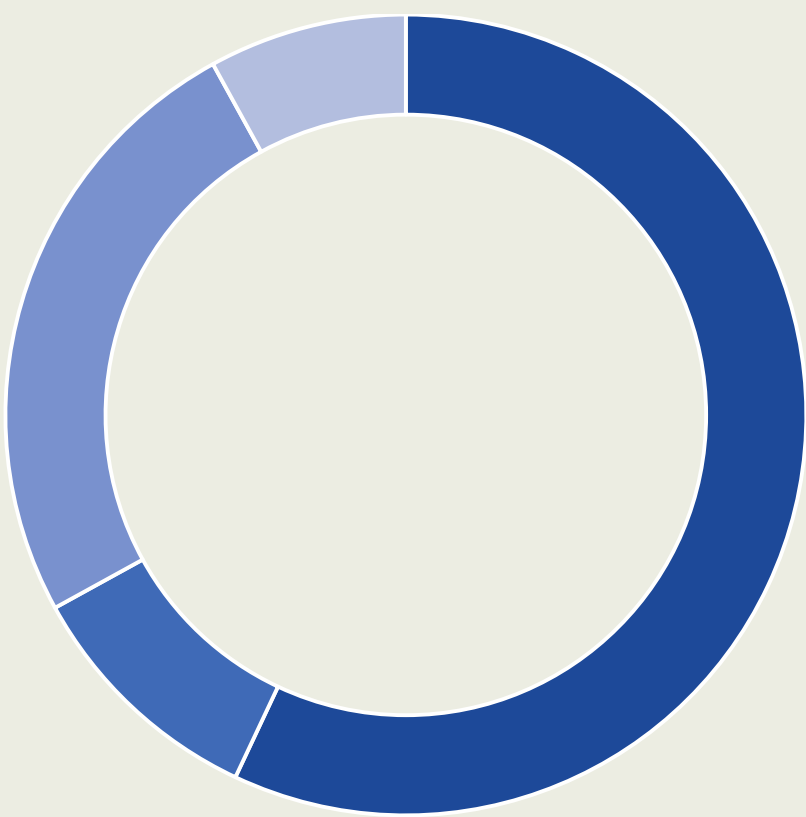
42% with school aged children

13% also own non-aggregate business

5%
business owners

25% require trucking daily

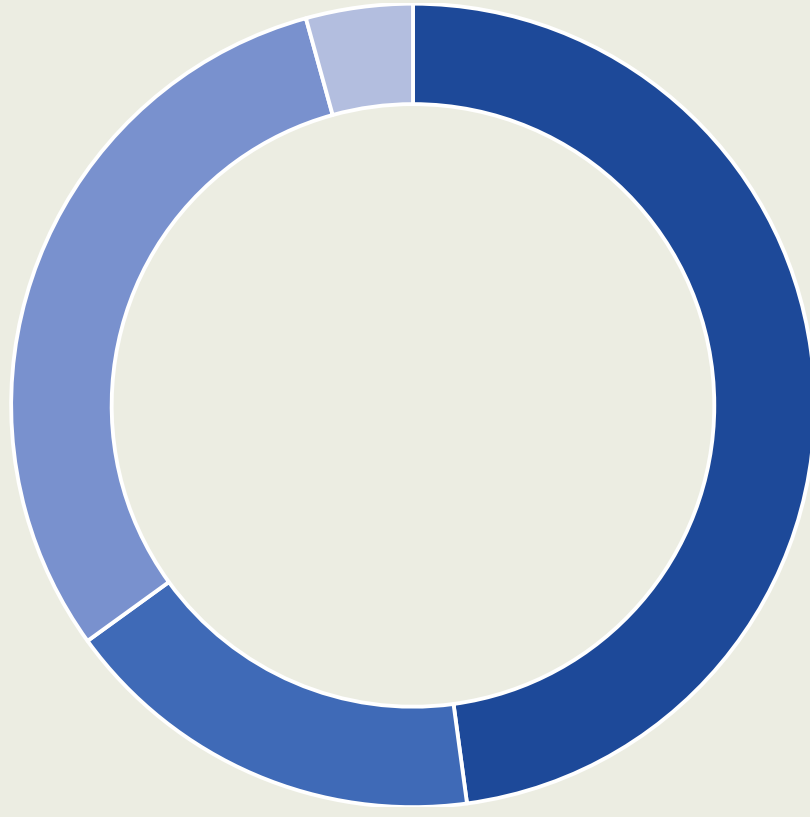
Where do you live?



57%
10%
25%
8%

Acton & surrounding areas
Surrounding rural areas
North Georgetown
South Georgetown

78%
28%
50%
7%

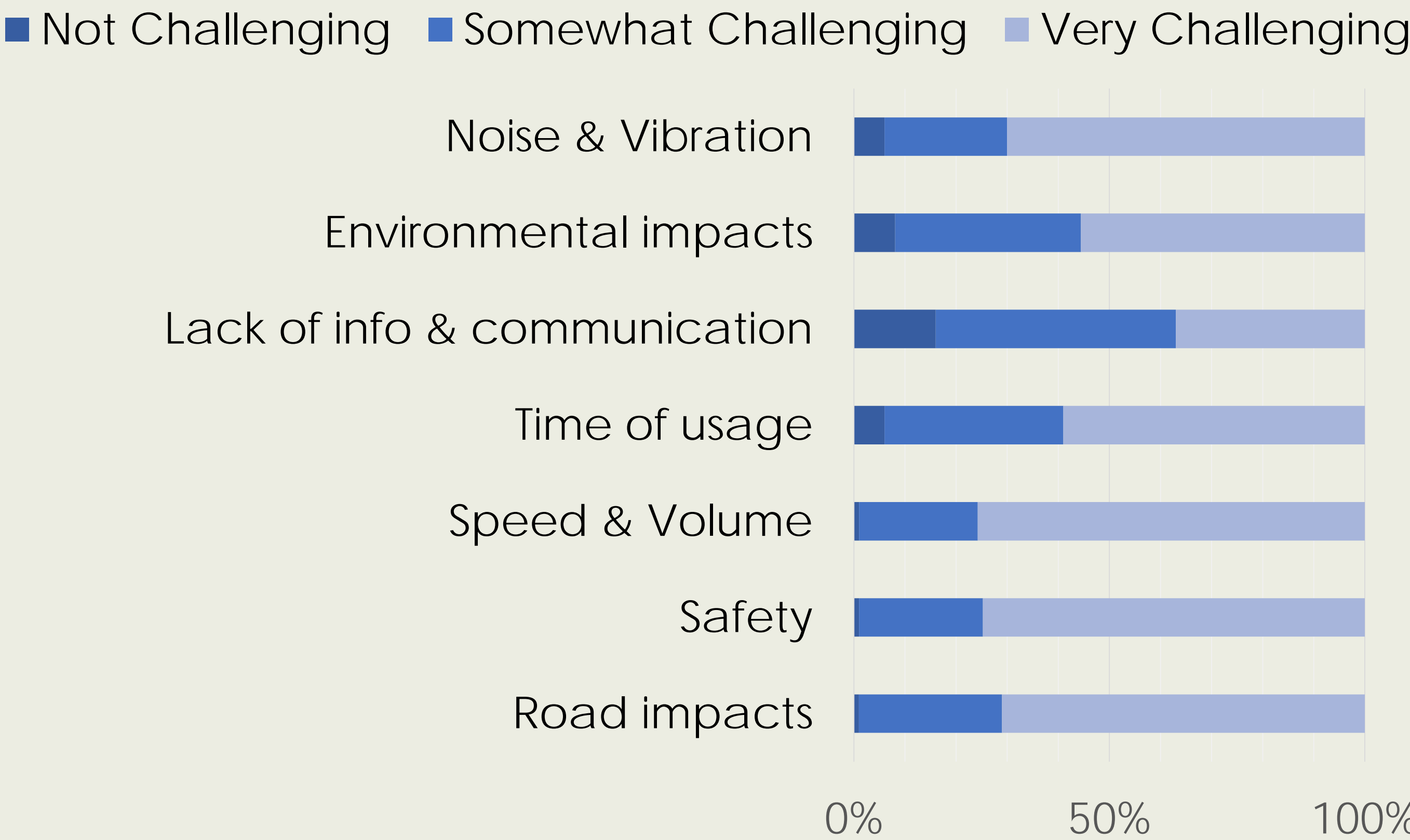


Where are the challenges?

70% say trucking is not well managed

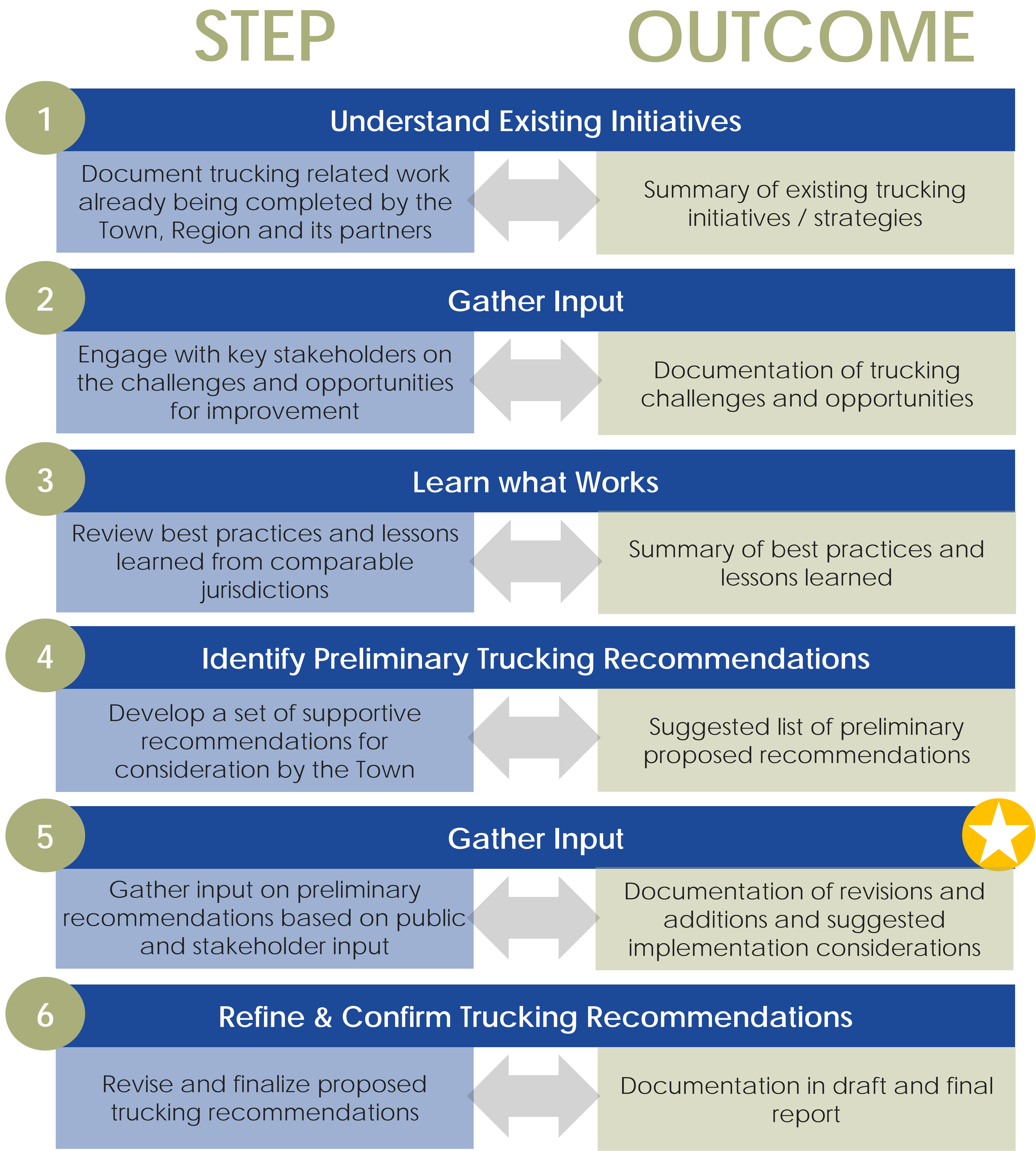
26% say trucking significantly impacts them daily

Greatest challenges



IDENTIFYING RECOMMENDATIONS

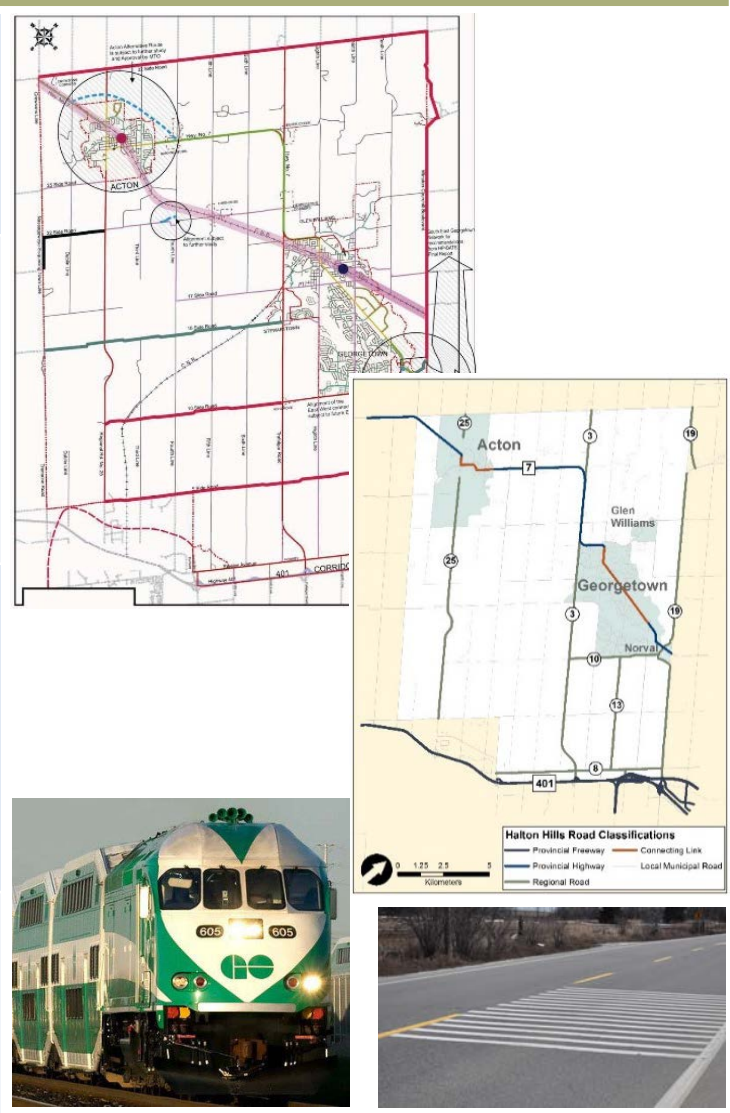
The proposed recommendations supporting trucking in Halton Hills were developed using the following process



SUMMARY OF RECOMMENDATIONS

ENGINEERING

Develop Bypass	<ul style="list-style-type: none">Explore potential for bypass on existing roads or new corridors in Acton, Georgetown and/or Norval
Establish Truck Network Info map	<ul style="list-style-type: none">Develop truck route network by profiling current network and conditions, planned upgrades, etc.
Improve Railway Crossing on Main St.	<ul style="list-style-type: none">Improve the GO railway crossing on Main St. North of Hwy 7 (Acton)MTO study to improve intersection
Implement Traffic Calming Measures	<ul style="list-style-type: none">Implement mixture of road treatments: speed bumps, signage, etc. Landscaping to shield adjacent land use



ENGAGEMENT

Establish Trucking Advisory Committee	<ul style="list-style-type: none">Build relationships with local stakeholders, partner with truck network users & create a forum to find solutions and make recommendations to mitigate truck impactsTo be brought forward to Community Affairs
Continue Engagement with Region & Province	<ul style="list-style-type: none">Work with Halton Region, Metrolinx, MTO and TC on future improvements and funding mechanisms
Engage Local Businesses & Residents	<ul style="list-style-type: none">Ongoing education and dialogue between Town, residents and business on trucking issuesProvide residents and businesses opportunity to raise issues while being involved in the decision-making process



EDUCATION

Safe Driving Program	<ul style="list-style-type: none">Communications with stakeholders regarding safe travel for all modes: truck, auto, active transportation, transit, etc.Partnership with Halton Region Police, building on current work
Educate Users of the Truck Route Network	<ul style="list-style-type: none">Residents using active modes of transportation will become aware of where trucks are permitted for improved safetyWill increase awareness among aggregate truck drivers and improve adherence to the network and rules
Coordinate Overweight/Oversize Application process	<ul style="list-style-type: none">Ensure consistency with neighbouring regionsEducate truck owner/operators and local businesses on the application process and regulations



ENFORCEMENT

Permanent Weigh Station (Hwy 7)	<ul style="list-style-type: none">Increase enforcement for safe load weights on Hwy 7 between Georgetown and Acton
Continue Truck Safety Blitzes	<ul style="list-style-type: none">Support Halton Region Police to identify appropriate locations for enforcement/safety blitzes
Coordinate Overweight/Oversize Application process	<ul style="list-style-type: none">Ensure consistency with neighbouring regionsImprove process of moving overweight/oversize goods to benefit local businesses



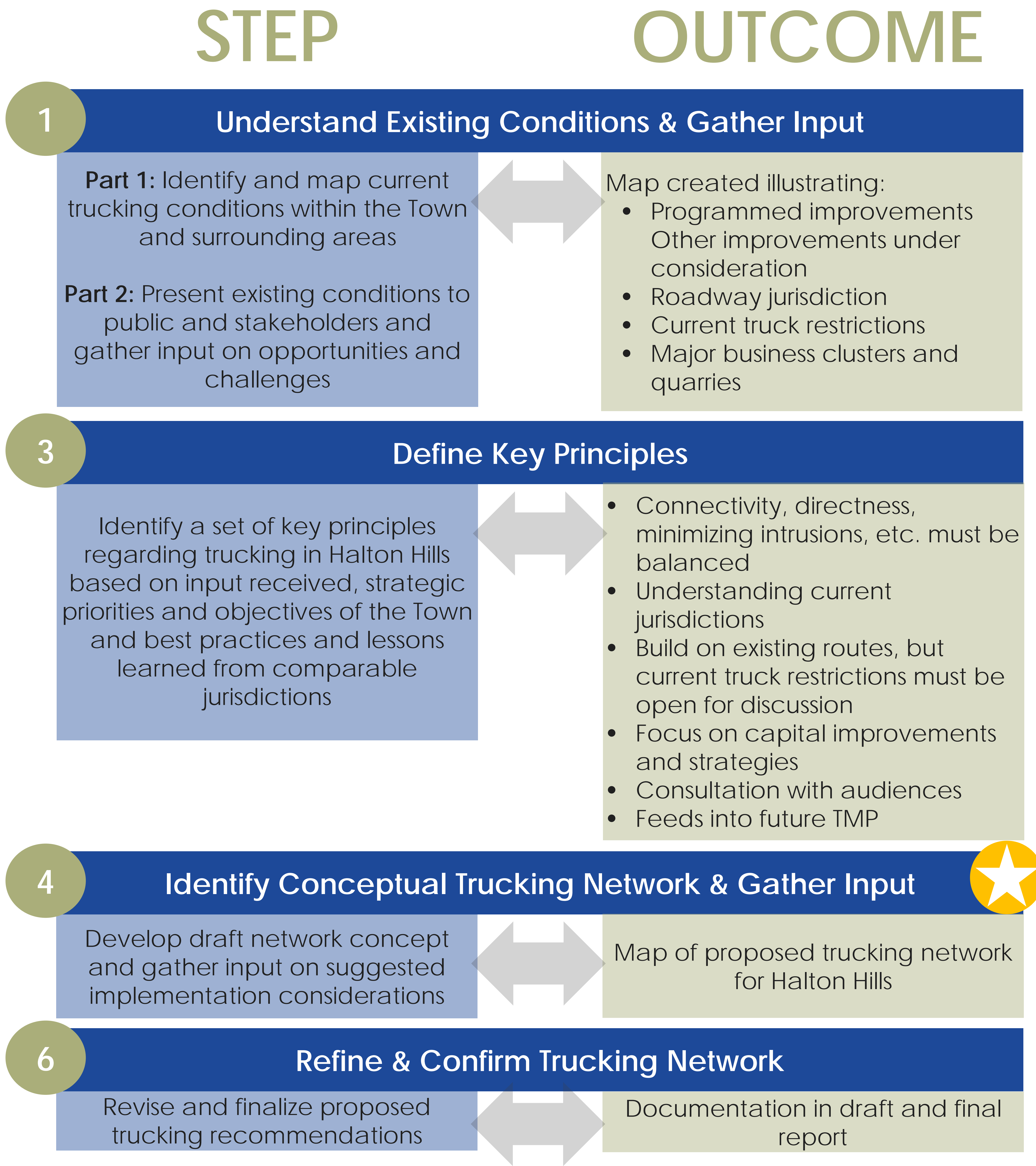
EVALUATION

Establish a Performance Measurement System	<ul style="list-style-type: none">Measure the performance of the Improvement Strategies to ensure they have an effective impact on the communityData collection to help make the case for additional funding from various sources
--	--



IDENTIFYING A TRUCKING NETWORK

The proposed trucking network concept for the Town of Halton Hills was identified using the following steps



STAY ENGAGED

11

We want you to stay involved as we develop the Halton Hills trucking strategy!

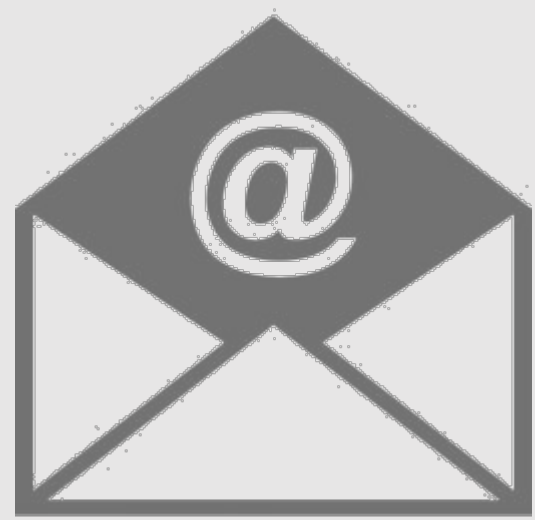
Learn about the different ways you can keep in touch...

1



Provide your input online using the Town's engagement tool
<http://www.letstalkhaltonhills.ca/truckingstrategy>

2



Contact a member of the study team by emailing either of the project contacts below

Maureen Van Ravens

Town Project Manager

T: 905-873-2601 Ext. 2314

E: maureenv@haltonhills.ca

Adrian Lightstone

WSP Project Manager

T: 416-644-8723

E: adrian.lightstone@wspgroup.com



PUBLIC OPEN HOUSE#2 | November 28 & 29, 2017
TOWN OF HALTON HILLS TRUCKING STRATEGY