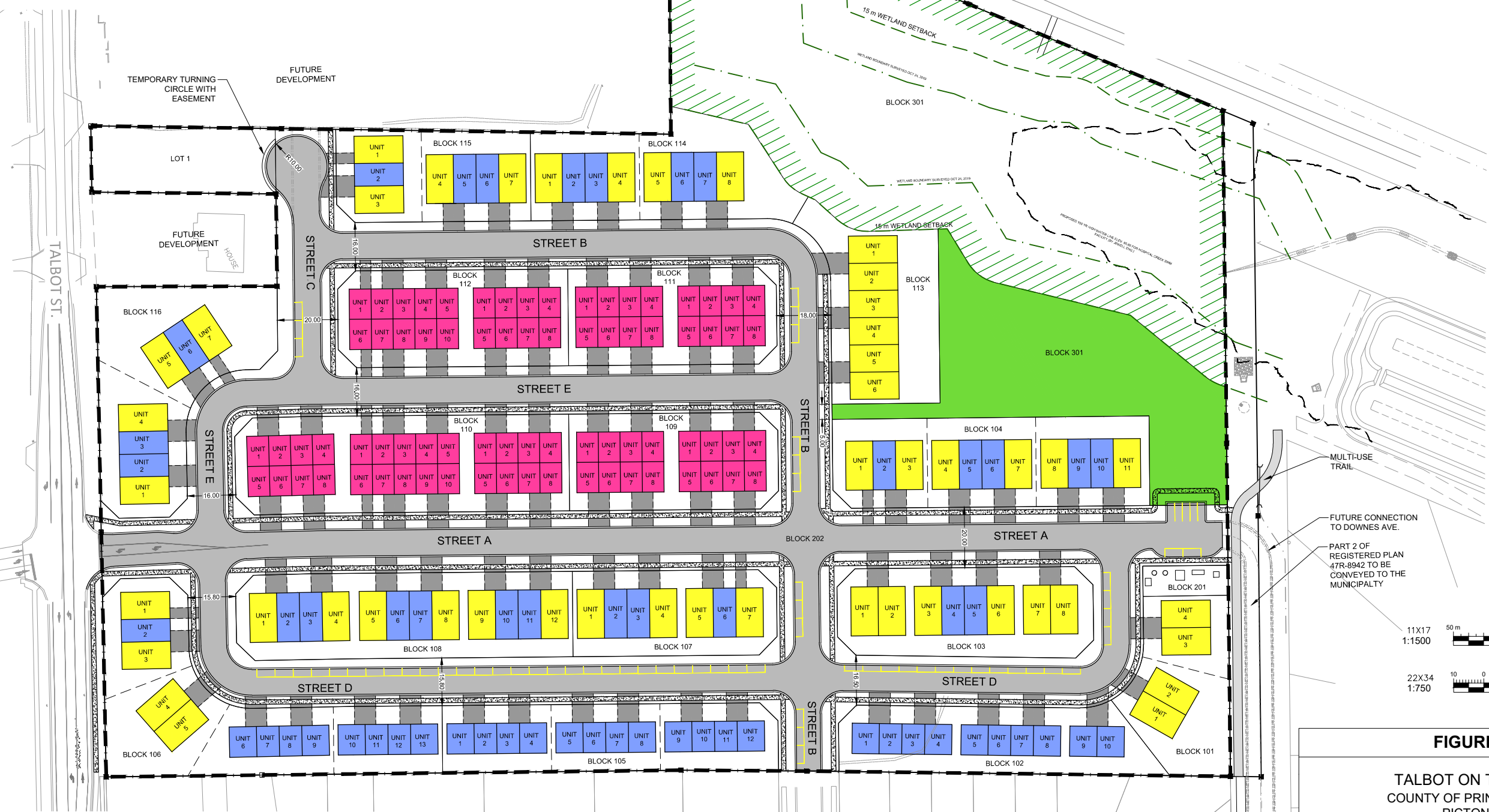
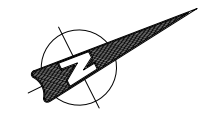


SITE LAND USE	UNITS	STOREYS (PER FOOTPRINT)	FRONT SETBACK	REAR SETBACK	EXT. SIDE YARD SETBACK	INT. SIDE YARD SETBACK
FRONT LOADED TOWN HOUSES - BLOCKS 101-108, 113-116	104	MAX. 2	4.5 m (6.0 m to garage)	6.0 m	1.5 m	1.5 m
BACK TO BACK TOWN HOUSES - BLOCKS 109-112	76	MAX. 3	6.0 m	6.0 m	1.5 m	2.5 m
SINGLE DETACHED HOMES - LOT 1	1	MAX. 2	R1	R1	R1	R1
TOTAL:	182					
TOTAL AREA:	4.19 ha					
DENSITY:	43.4 units/ha					



LEGEND:

	LIMIT OF SUBDIVISION		BACK TO BACK TOWNHOUSES (3 STOREYS INCLUDING GARAGE 10m MAX. HIGH)
	OPEN SPACE (UNDISTURBED LAND)		FRONT LOADED TOWNHOUSES (1 STOREY)
	PARKLAND DEDICATION (BLOCK 301)		FRONT LOADED TOWNHOUSES (2 STOREYS)

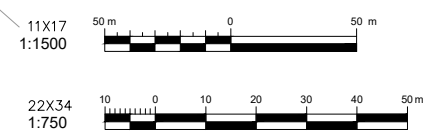


FIGURE 1A
TALBOT ON THE TRAIL
 COUNTY OF PRINCE EDWARD
 PICTON, ON
CONCEPT PLAN
 SCALE: 1:750 (22X34) 1:1500 (11X17)



K:\Projects\19519 - Talbot on the Trail\19519-1 Project - Talbot on the Trail\Drawings\19519-1 - Concept Plan.dwg, 2021-03-02 8:59 AM