

February 26, 2021

File No. 19519-1

1974692 Ontario Inc.
141 Main Street, Unit 203
Picton, ON
K0K 2T0

Attn: **David Cleave**

Ref: **Letter Addendum 01 to PRELIMINARY STORMWATER MANAGEMENT REPORT
for Talbot on the Trail Subdivision, dated May 2020**

The following revisions are provided to the above referenced Preliminary Stormwater Management Report dated May 2020 in support of the revised Draft Plan of Subdivision.

1.1 Proposed Development

The proposed Concept Plan has been revised, and is provided in attached **Figure 1A**.

4.4 Post-Development Drainage

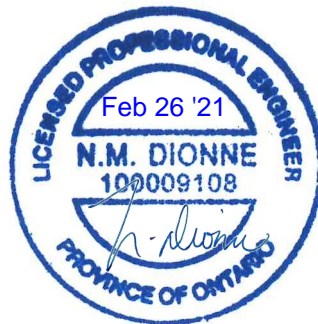
Based on the revised Draft Plan and development density, the proposed post-development flows to the Hospital Creek Facility remain the same, as the runoff coefficient and drainage area remains the same.

Yours very truly

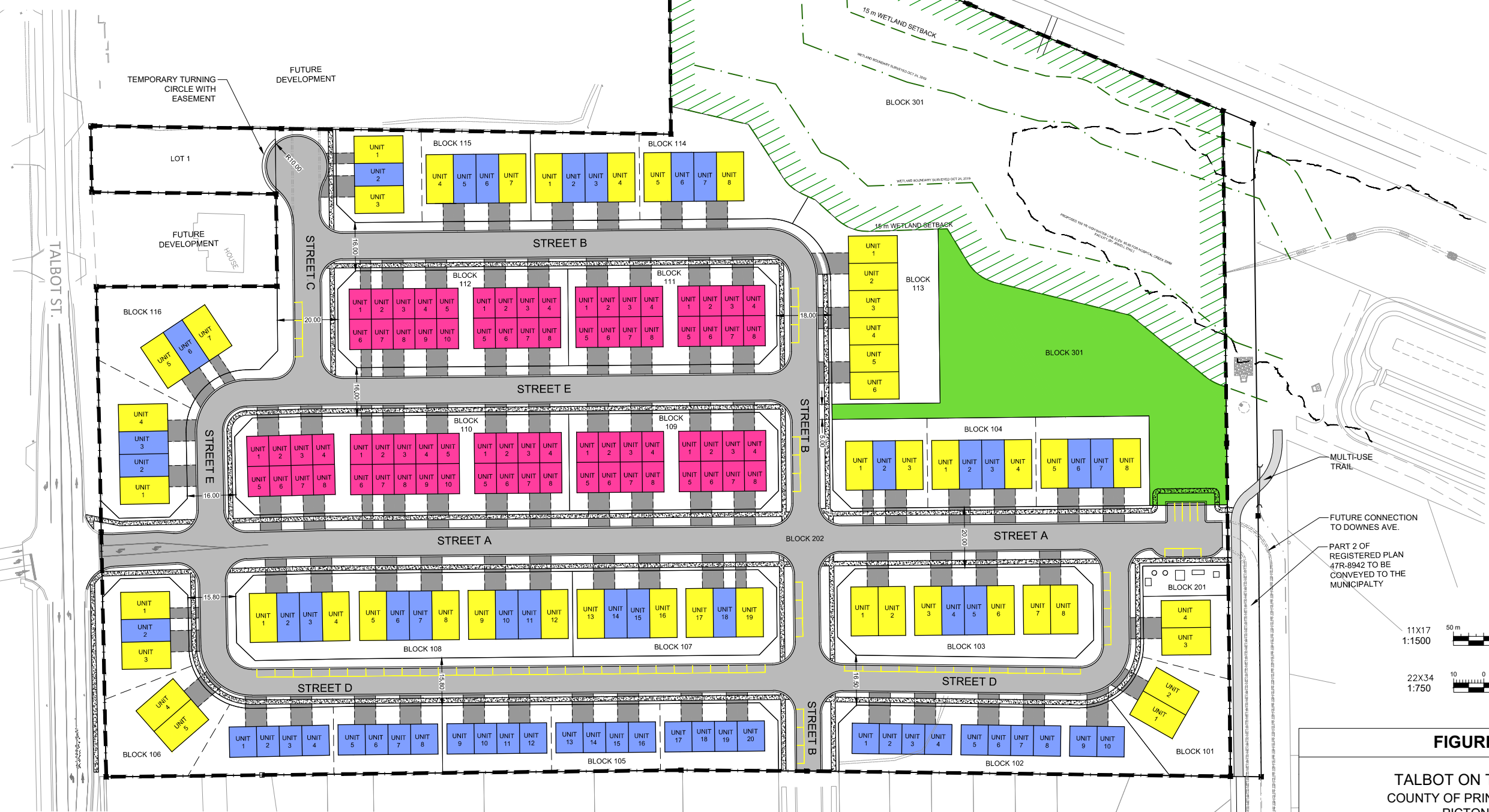
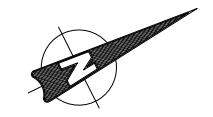
AINLEY GRAHAM AND ASSOCIATES LIMITED

Prepared by:

Nancy Dionne, P. Eng.
Senior Engineer



SITE LAND USE	UNITS	STOREYS (PER FOOTPRINT)	FRONT SETBACK	REAR SETBACK	EXT. SIDE YARD SETBACK	INT. SIDE YARD SETBACK
FRONT LOADED TOWN HOUSES - BLOCKS 101-108, 113-116	104	MAX. 2	4.5 m (6.0 m to garage)	6.0 m	1.5 m	1.5 m
BACK TO BACK TOWN HOUSES - BLOCKS 109-112	76	MAX. 3	6.0 m	6.0 m	1.5 m	2.5 m
SINGLE DETACHED HOMES - LOT 1	1	MAX. 2	R1	R1	R1	R1
TOTAL:	181					
TOTAL AREA:	4.18 ha					
DENSITY:	43.3 units/ha					



- LEGEND:**
- LIMIT OF SUBDIVISION
 - OPEN SPACE (UNDISTURBED LAND)
 - PARKLAND DEDICATION (BLOCK 301)
 - BACK TO BACK TOWNHOUSES (3 STOREYS INCLUDING GARAGE 10m MAX. HIGH)
 - FRONT LOADED TOWNHOUSES (1 STOREY)
 - FRONT LOADED TOWNHOUSES (2 STOREYS)

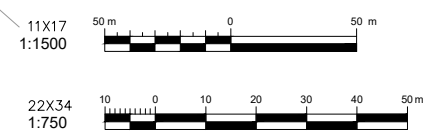


FIGURE 1A

TALBOT ON THE TRAIL
COUNTY OF PRINCE EDWARD
PICTON, ON
CONCEPT PLAN
SCALE: 1:750 (22X34) 1:1500 (11X17)



K:\Projects\19519 - Talbot on the Trail\19519-1 Project - Talbot on the Trail\Drawings\19519-1 - Concept Plan.dwg, 2021-02-26 2:29 PM