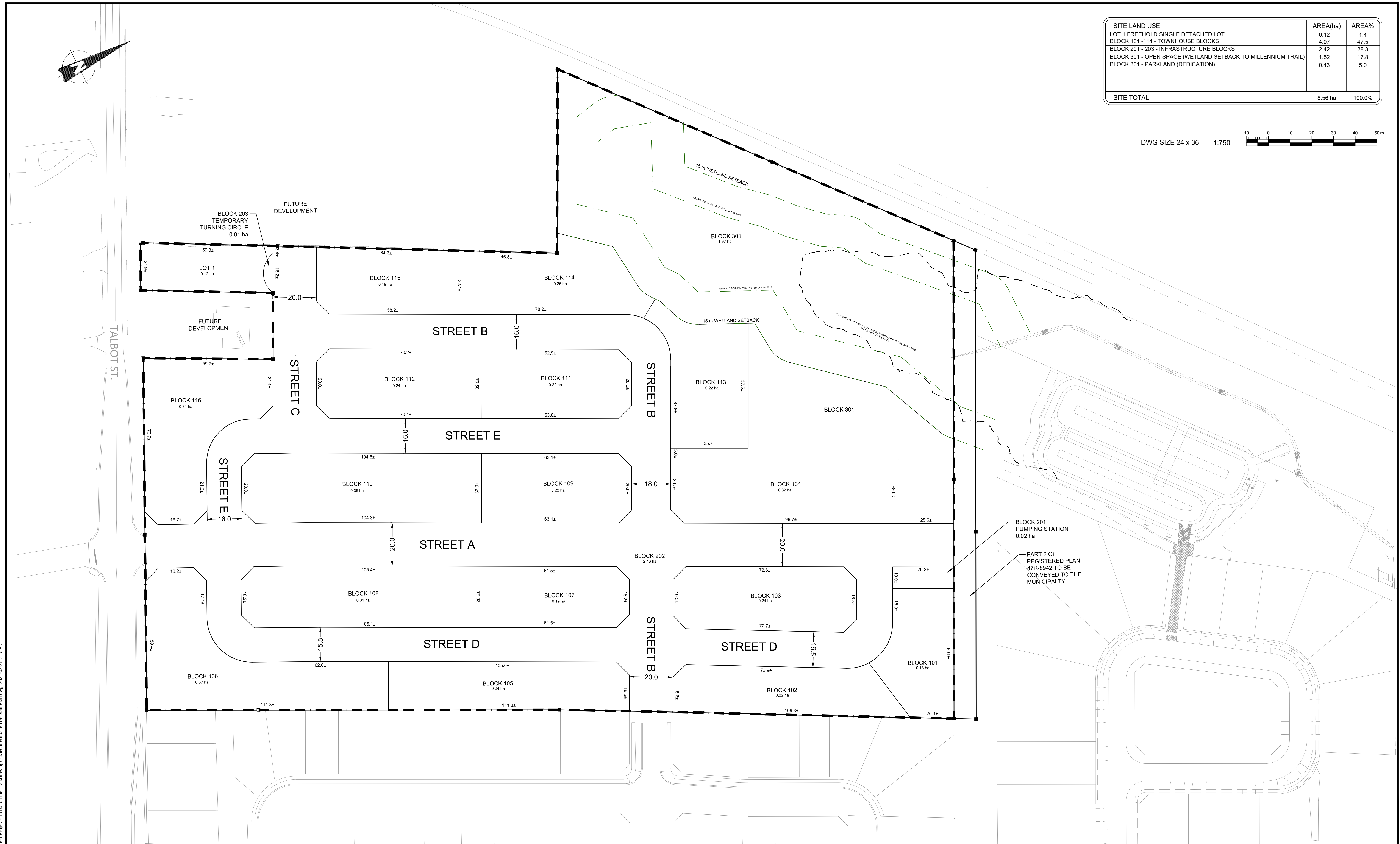
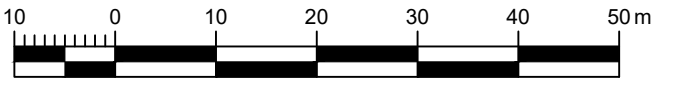


SITE LAND USE	AREA(ha)	AREA%
LOT 1 FREEHOLD SINGLE DETACHED LOT	0.12	1.4
BLOCK 101 - 114 - TOWNHOUSE BLOCKS	4.07	47.5
BLOCK 201 - 203 - INFRASTRUCTURE BLOCKS	2.42	28.3
BLOCK 301 - OPEN SPACE (WETLAND SETBACK TO MILLENNIUM TRAIL)	1.52	17.8
BLOCK 301 - PARKLAND (DEDICATION)	0.43	5.0
<b>SITE TOTAL</b>	<b>8.56</b>	<b>100.0%</b>

DWG SIZE 24 x 36 1:750



ADDITIONAL INFORMATION UNDER SECTION 51(17) OF THE PLANNING ACT.  
 (a) SEE SURVEYOR'S CERTIFICATE.  
 (b) AS SHOWN ON DRAFT PLAN.  
 (c) AS SHOWN ON DRAFT PLAN.  
 (d) SINGLE DETACHED RESIDENTIAL.  
 (e) AS SHOWN ON DRAFT PLAN.  
 (f) AS SHOWN ON DRAFT PLAN.  
 (g) AS SHOWN ON DRAFT PLAN.  
 (h) MUNICIPAL WATER AND SEWER.  
 (i) SANDY LOAM OR CLAY LOAM WITH LIMESTONE SUBSTRATE.  
 (j) AS SHOWN ON DRAFT PLAN.  
 (k) GARBAGE COLLECTION, FIRE PROTECTION, ROAD MAINTENANCE, SCHOOL BUSES, ETC.  
 (l) AS SHOWN ON DRAFT PLAN.

METRIC NOTE  
 DISTANCES SHOWN ON THIS PLAN ARE IN METRES AND CAN BE CONVERTED TO FEET BY DIVIDING BY 0.3048.  
 CONTOUR DATA  
 CONTOUR AND TOPOGRAPHIC INFORMATION GENERATED USING SURVEYOR'S TOPOGRAPHIC POINT DATA PROVIDED.

SURVEYOR'S CERTIFICATE  
 I CERTIFY THAT THE BOUNDARIES OF THE LANDS TO BE SUBDIVIDED AND THEIR RELATIONSHIP TO ADJACENT LANDS ARE CORRECTLY SHOWN.  
 SIGNATURE \_\_\_\_\_ DATE \_\_\_\_\_

OWNER'S CERTIFICATE  
 I AUTHORIZE THE AINLEY GROUP TO PREPARE AND SUBMIT THIS DRAFT PLAN OF SUBDIVISION TO THE TOWN OF PICTON FOR APPROVAL.  
 SIGNATURE \_\_\_\_\_ DATE \_\_\_\_\_

**DRAFT**

NO.	REVISIONS	DATE	INITIAL

TALBOT ON THE TRAIL  
 10451353 CANADA LTD.  
 PICTON, ONTARIO  
 DRAFT PLAN OF SUBDIVISION

SCALE: 1:750  
 DESIGN: SO  
 DRAWN: SO  
 CHECKED: -  
 DATE: FEB 2021

CONSULTING ENGINEERS PLANNERS  
 CONTRACT No. 19519-1 DWG 19519-DP1

K:\Projects\19519-1 - Talbot on the Trail\Drawings\19519-Draft Plan.dwg 2021-02-26 2:15 PM