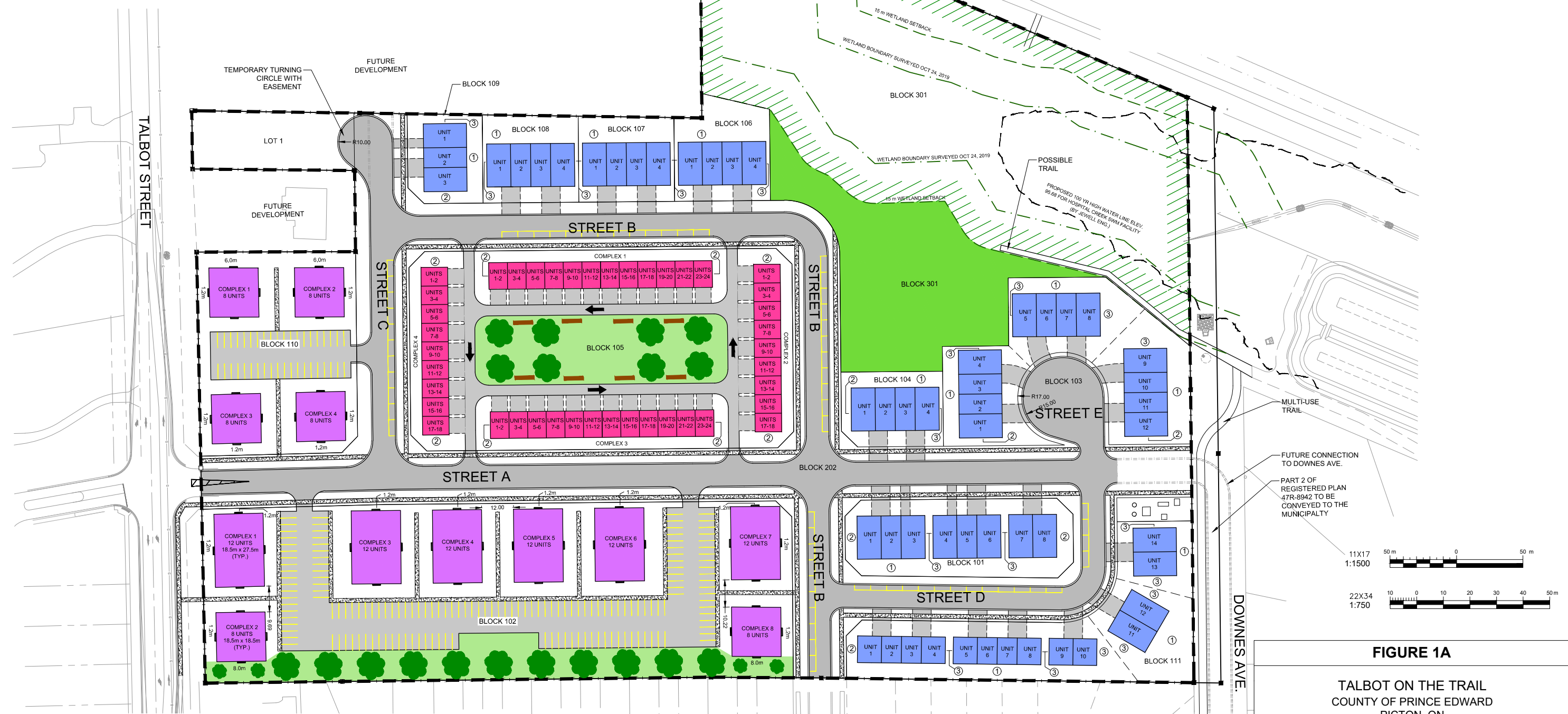


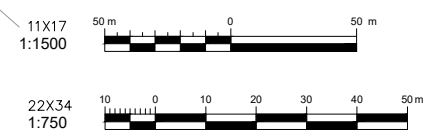
SITE LAND USE	UNITS	STOREYS (PER FOOTPRINT)	FRONT SETBACK
FRONT LOADED TOWN HOUSES - BLOCKS 101, 103, 104, 106 - 109, 111	53	2	4.5 m (6.0 m to garage)
STACKED TOWNHOUSES - BLOCK 105	84	4	4.5 m
STACKED TOWNHOUSES - BLOCKS 102, 110	120	3.5	1.2 m to 8.0 m
SINGLE DETACHED HOMES - LOT 1	1	2	7.5 m
<b>TOTAL:</b>	<b>258</b>		
<b>TOTAL AREA:</b>	<b>4.60 ha</b>		
<b>DENSITY:</b>	<b>56.1 units/ha</b>		

OTHER SETBACKS (FRONT LOADED TH AND BLOCK 105)		
LOCATION	DISTANCE	SYMBOL
REAR YARD	6.0 m	①
EXT. SIDE YARD	1.5 m	②
INT. SIDE YARD	1.5 m	③



**LEGEND:**

	LIMIT OF SUBDIVISION		STACKED TOWNHOUSES (4 STOREYS)
	OPEN SPACE (UNDISTURBED LAND)		STACKED TOWNHOUSES (3.5 STOREYS)
	PARKLAND DEDICATION (BLOCK 301)		FRONT LOADED TOWNHOUSES (2 STOREYS)



**FIGURE 1A**

TALBOT ON THE TRAIL  
 COUNTY OF PRINCE EDWARD  
 PICTON, ON  
**CONCEPT PLAN**  
 SCALE: 1:750 (22X34) 1:1500 (11X17)



K:\Projects\19519 - Talbot on the Trail\19519-1 Project - Talbot on the Trail\Drawings\ch\Exhibits\Report Figures\19519-1 - Concept Plan.dwg, 2020-12-11 2:01 PM