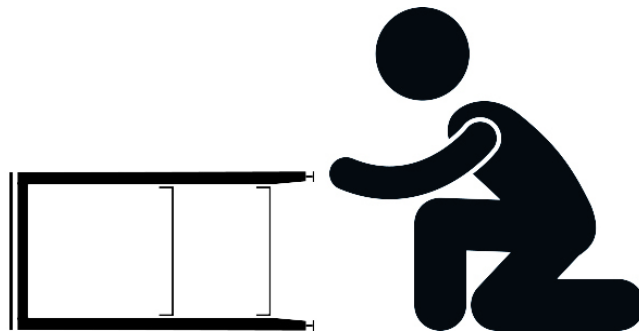


co°quo

Safety Notice & Installation Instructions



RADIX COLLECTION

Base Cabinets

PLEASE READ AND FOLLOW THE SAFETY NOTICE PRIOR TO ASSEMBLY

Watch our installation videos on YouTube for more details: <https://youtu.be/lqHlaBsoEiQ>.

At coquo, your safety is our priority. It is very important to always follow the installation instructions and to conform to the safety notice that is included in the package. These documents are also available free of charge online at coquo.ca.



Safety Notice

Your safety is a priority for coquo. It is important to always follow the assembly instructions and to comply with the safety warnings included in your module's packaging. These documents are also available free of charge at coquo.ca.



WARNING

Modules that are not secured to the wall with safety clips and appropriate anchors may tip and/or be a falling hazard, which can lead to accidents and/or serious injuries. To prevent a module from tipping over, it is essential to use safety clips and anchors to secure the module to the wall. Safety clips are included in the packaging. If, however, the clips are missing or misplaced, contact a modular specialist, who will be happy to send you the necessary clips free of charge. The anchors are not included in the package as the choice of anchor depends on the wall type that the modules will be affixed to. Do not hesitate to seek advice from your hardware store to properly choose the anchors that correspond to your wall type.

The cabinets cannot be used for climbing and they cannot support weight that exceeds the maximum limit specific to each module.



Safety Recommendation: Prevent children from climbing on or clinging to furniture, islands, drawers, shelves, or doors.

Watch our installation videos on YouTube for more details: <https://youtu.be/lqHlaBsoEiQ>.

At coquo, your safety is our priority. It is very important to always follow the installation instructions and to conform to the safety notice that is included in the package. These documents are also available free of charge online at coquo.ca.



Safety Notice

BASE CABINETS: Radix and Volitare Collections

If your configuration includes a combination of several modules, it is essential to attach the modules with the appropriate safety clips. However, if the clips are missing or misplaced, contact a modular specialist, who will gladly send you the necessary clips free of charge. The modules must also be secured to the wall using the appropriate anchors for your type of wall.

Modules that are not secured to the wall with safety clips and appropriate anchors may tip and/or be a falling hazard, which can lead to accidents and/or serious injuries.

Drawers

Each drawer is designed to accommodate a maximum weight of 50 pounds (22 kg). Place heavier objects in the bottom drawer, when applicable. Oak veneer offers a solid and sturdy surface, but some kitchen accessories may leave a residue or scratch the surface.

Metal Shelves

Each metal shelf is designed to accommodate a maximum weight of 50 pounds (22 kg). The metal shelf is not secured to the module and can tilt if not properly positioned. Electrostatic painting provides increased strength but some kitchen accessories may leave a residue or scratch the surface.

Wooden Doors and Shelves

Doors are not designed to withstand weight or pressure. Each wood shelf is designed to accommodate a maximum weight of 20 pounds (9 kg). Oak veneer offers a solid and sturdy surface, but some kitchen accessories may leave a residue or scratch the surface.

Metal Bins

Each metal bin is designed to hold a maximum weight of 50 pounds (22 kg). In order to avoid tipping, the metal bin must be properly secured to the module according to the installation instructions. Electrostatic painting provides increased strength but some kitchen accessories may leave a residue or scratch the surface.

Benches or Coffee Tables

The bench or coffee table is designed to accommodate a maximum weight of 200 pounds (91 kg). The base and top surface cannot be used for climbing and they cannot support extra weight. These modules, which are not secured to the wall with safety clips, carry a risk of tipping and/or falling, which can lead to accidents and/or serious injuries.

Watch our installation videos on YouTube for more details: <https://youtu.be/lqHlaBsoEiQ>.

At coquo, your safety is our priority. It is very important to always follow the installation instructions and to conform to the safety notice that is included in the package. These documents are also available free of charge online at coquo.ca.

co°quo

Combination of Cabinets for Island Configuration

If your island configuration includes a combination of base cabinets, it is essential to attach the modules side by side and/or back-to-back with the appropriate safety clips. However, if the clips are missing or misplaced, contact a modular specialist, who will gladly send you the necessary clips free of charge. The modules cannot be used for climbing and they cannot support extra weight. These modules, which are not secured to the wall with safety clips, carry a risk of tipping and/or falling, which can lead to accidents and/or serious injuries.

Cabinet Structure

The wooden structure of the modules cannot be used for climbing and it cannot support weight that exceeds the maximum limit specific to each module.

Counters

The module is designed to accommodate a maximum weight of 100 pounds (45 kg), including the weight of the counter. The base cabinets include anchoring blocks that can be used to screw a wooden counter into place. For an installation including a stone counter, or any other type of surface that cannot be screwed into place, an adhesive must be used. Counters are not included.

Metal Feet

It is essential to use the metal feet provided in your packaging to adjust and level the module. Adjustable metal feet provide more stability. They cannot be replaced by other types of feet such as casters. The addition of a felt pad under the feet is not recommended and may affect the stability of the module. **In order to ensure the stability of the module, the 4 metal feet should be inserted and screwed in until the thread is no longer visible.** The metal feet may scratch the floor if the modules are moved or dragged. The weight of the modules, counter and accessories may cause the metal feet to leave a mark on the floor over time.

Watch our installation videos on YouTube for more details: <https://youtu.be/lqHlaBsoEiQ>.

At coquo, your safety is our priority. It is very important to always follow the installation instructions and to conform to the safety notice that is included in the package. These documents are also available free of charge online at coquo.ca.

co°quo

Installation Instructions

Coquo modules are easy to install! No need to put together a multitude of components, the modules are shipped already pre-assembled.

Necessary Tools

Before beginning, be sure to have these items on hand:



- A level
- A pencil
- A tape measure
- Anchors*
- A Phillips screwdriver

* The appropriate anchors should correspond to your type of wall. Anchors are not included as the choice of anchor depends on your type of wall. Do not hesitate to ask for advice at your hardware store.

Preparation



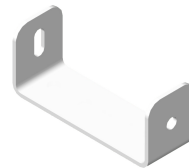
- Prepare your space to receive the coquo modules and invite some friends over to help you!
- Make sure that the arrow indicators for the positioning of the boxes are respected.
- Open the box on the side where the indication is marked and remove the module from the packaging, while being careful not to scratch your floor.

Your package contains:

1. The module
2. The coquo safety notice and installation instructions leaflet
3. The safety clip **A** (wall fastening kit) X 1
4. The safety clip **B** (joiner clip) X 2



Safety clip A :
Wall fastening kit



Safety clip B :
Joiner clip

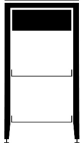
Watch our installation videos on YouTube for more details: <https://youtu.be/lqHlaBsoEiQ>.

At coquo, your safety is our priority. It is very important to always follow the installation instructions and to conform to the safety notice that is included in the package. These documents are also available free of charge online at coquo.ca.

co°quo

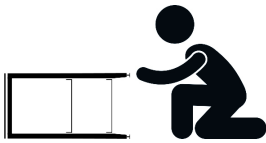
Assembly

Step 1—Remove drawers



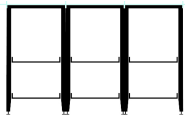
- Place the module in its upright position, pull out one of the drawers and locate the orange levers on the reverse side.
- Remove the drawer from the module by simultaneously clamping on the orange levers under the drawer and gently lifting.
- Place the drawer on a clean and level surface.
- Repeat the process for the remaining drawers.

Step 2—Feet and adjustments



- Position the module on a piece of cardboard and place it on its back.
- In order to ensure the stability of the module, the 4 metal feet should be inserted and screwed in until the thread is no longer visible.
- For ease of installation, adjust the metal feet so they are roughly 1" from the wooden leg.
- Place the module on its feet in the upright position.

Step 3—Guides



- Using a pencil, make a mark on the wall to indicate the position of the cabinets. These marks will serve as a guide to position the modules according to your predetermined plan.
- Position the first module in its position according to the mark on the wall.
- Using a level, adjust the height of the first module by adjusting the metal feet until the cabinet is perfectly level.
- Position the next module in place according to the guides and the predetermined plan and repeat the levelling process.
- In order to ensure the stability of the module, the 4 metal feet should be inserted and screwed in until the thread is no longer visible.

Step 4—Safety clip A: Fastening the modules to the wall



- Using the wall bracket as a guide, trace a line on the wall which corresponds to the centre of each cabinet.
- Remove the cabinet from its position.
- Place the shorter side of the wall bracket under the traced line and make a mark that corresponds to the bottom of the long slot.
- Slide the bracket down until the mark is in the centre of the top hole and make a mark in the centre of the long slot.
- Affix the wall bracket to the wall, starting with the screw in the long slot. Be sure to use the appropriate anchors for your type of wall.
- In order to make sure that the bracket is properly positioned, slide the module temporarily back into place. The bracket should fit between the

Watch our installation videos on YouTube for more details: <https://youtu.be/lqHlaBsoEiQ>.

At coquo, your safety is our priority. It is very important to always follow the installation instructions and to conform to the safety notice that is included in the package. These documents are also available free of charge online at coquo.ca.

co°quo

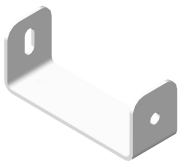
top wooden crosspiece and the metal back. The height of the bracket can be adjusted accordingly before affixing the screw in the top hole.

- Slide the module back into its position once the bracket is well adjusted and secured.
- Place the smaller securing bracket onto the installed wall bracket in front of the wood crosspiece of the module, and secure into place using the supplied screw.

Refer to our video for more information on how to install the safety clip A: <https://youtu.be/lqHlaBsoEiQ>.

Step 5—Safety clip B: Attaching modules together

- Slip the safety clip B under the top crosspieces of the modules to be attached together and secure in place using a screwdriver.



Refer to our video for more information on how to install the safety clip B: <https://youtu.be/lqHlaBsoEiQ>.

Step 6—Drawers and shelves

- To replace the drawers, pull the sliders completely out of the cabinet, place the drawer on the sliders and push until you hear a click.
- Pull out the drawer and push it back in to test the mechanism.
- To position the shelves, insert the shelf at an angle and set it down on the horizontal wood crosspiece on either side.

Appliance kit

- To allow for flexibility, the appliance kit is delivered with a crosspiece that can be modified according to the height of the appliance. The crosspiece measures $\frac{3}{4}$ " by default, but it can be turned to measure $1\frac{1}{4}$ " if necessary. This crosspiece can also be removed completely if more clearance is needed.
- It may be necessary to make openings in the appliance kit to allow plumbing and electrical conduits to pass.

Watch our installation videos on YouTube for more details: <https://youtu.be/lqHlaBsoEiQ>.

At coquo, your safety is our priority. It is very important to always follow the installation instructions and to conform to the safety notice that is included in the package. These documents are also available free of charge online at coquo.ca.