



ADVENTURE
CANADA

⚓ SMALL-SHIP EXPEDITIONS

Antarctica

2023

Contents

4 Guidance For Visitors To The Antarctic

TRIPS

- 6 Antarctica, South Georgia & Falklands Explorer
- 12 Journey to the Circle
- 18 Antarctic Whale Journey

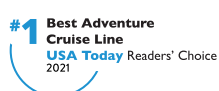
THE SHIP

- 24 The *Ocean Endeavour*

PRICING

- 26 Berth Prices
- 27 Program Enhancements

All 2023 Antarctic expeditions are operated by and presented in partnership with Intrepid Travel.





**ADVENTURE
CANADA**





Guidance for Visitors to the Antarctic

Recommendation XVIII-1, adopted at the antarctic treaty meeting, Kyoto, 1994

Activities in the Antarctic are governed by the Antarctic Treaty of 1959 and associated agreements, referred to collectively as the Antarctic Treaty System. The Treaty established Antarctica as a zone of peace and science.

In 1991, the Antarctic Treaty Consultative Parties adopted the Protocol on Environmental Protection to the Antarctic Treaty, which designates the Antarctic as a natural reserve. The Protocol sets out environmental principles, procedures, and obligations for the comprehensive protection of the Antarctic environment and its dependent and associated ecosystems. The Consultative Parties have agreed that as far as possible and in accordance with their legal system, the provisions of the Protocol should be applied as appropriate. The Environmental Protocol was ratified in January 1998.

The Environmental Protocol applies to tourism and non-governmental activities, as well as governmental activities in the Antarctic Treaty Area. It is intended to ensure that these activities do not have adverse impacts on the Antarctic environment, or on its scientific and aesthetic values.

This Guidance for Visitors to the Antarctic is intended to ensure that all visitors are aware of, and are therefore able to comply with, the Treaty and the Protocol. Visitors are, of course, bound by national laws and regulations applicable to activities in the Antarctic.

PROTECT ANTARCTIC WILDLIFE

- Taking or harmful interference with Antarctic wildlife is prohibited except in accordance with a permit issued by a national authority.
- Do not use aircraft, vessels, small boats, or other means of transport in ways that disturb wildlife, either at sea or on land.
- Do not feed, touch, or handle birds or seals, or approach or photograph them in ways that cause them to alter their behaviour. Special care is needed when animals are breeding or moulting.
- Do not damage plants, for example by walking, driving, or landing on extensive moss beds or lichen-covered scree slopes.
- Do not use guns or explosives. Keep noise to a minimum to avoid frightening wildlife.
- Do not bring non-native plants or animals into the Antarctic, such as live poultry, pet dogs and cats, or house plants.

RESPECT PROTECTED AREAS

- A variety of areas in the Antarctic have been afforded special protection because of their

particular ecological, scientific, historic, or other values. Entry into certain areas may be prohibited except in accordance with a permit issued by an appropriate national authority.

- Activities in and near designated Historic Sites and Monuments and certain other areas may be subject to special restrictions.
- Know the locations of areas that have been afforded special protection and any restrictions regarding entry and activities that can be carried out in and near them.
- Observe applicable restrictions.
- Do not damage, remove, or destroy Historic Sites or Monuments or any artefacts associated with them.

RESPECT SCIENTIFIC RESEARCH

- Do not interfere with scientific research, facilities, or equipment.
- Obtain permission before visiting Antarctic science and support facilities; reconfirm arrangements 24-72 hours before arrival; and comply with the rules regarding such visits.
- Do not interfere with, or remove, scientific equipment or marker posts, and do not disturb experimental study sites, field camps, or supplies.

BE SAFE

- Be prepared for severe and changeable weather and ensure that your equipment and clothing meet Antarctic standards. Remember that the Antarctic environment is inhospitable, unpredictable, and potentially dangerous.
- Know your capabilities and the dangers posed by the Antarctic environment, and act accordingly. Plan activities with safety in mind at all times.
- Keep a safe distance from all wildlife, both on land and at sea.
- Take note of, and act on, the advice and

instructions from your leaders; do not stray from your group.

- Do not walk onto glaciers or large snow fields without the proper equipment and experience; there is a real danger of falling into hidden crevasses.
- Do not expect a rescue service. Self-sufficiency is increased, and risks reduced by sound planning, quality equipment, and trained personnel.
- Do not enter emergency refuges (except in emergencies). If you use equipment or food from a refuge, inform the nearest research station or national authority once the emergency is over.
- Respect any smoking restrictions, particularly around buildings, and take great care to safeguard against the danger of fire. This is a real hazard in the dry environment of Antarctica.

KEEP ANTARCTICA PRISTINE

- Antarctica remains relatively pristine, the largest wilderness area on Earth. It has not yet been subjected to large-scale human disturbances. Please keep it that way.
- Do not dispose of litter or garbage on land. Open burning is prohibited.
- Do not disturb or pollute lakes or streams. Any materials discarded at sea must be disposed of properly.
- Do not paint or engrave names or graffiti on rocks or buildings.
- Do not collect or take away biological or geological specimens or man-made artefacts as a souvenir, including rocks, bones, eggs, fossils, and parts or contents of buildings.
- Do not deface or vandalize buildings or emergency refuges, whether occupied, abandoned, or unoccupied.

Antarctica, South Georgia & Falklands Explorer

January 20–February 9, 2023

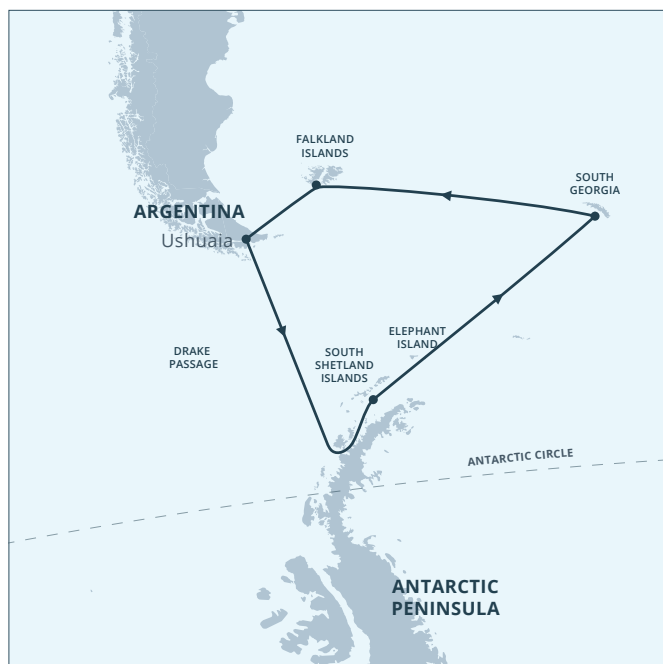
Starts: Ushuaia, Argentina

Ends: Ushuaia, Argentina

From **\$18,790** to **\$33,490** USD
per person (*details p.26*)

Aboard the *Ocean Endeavour*

No Charter Flights



Itinerary Map

Day 1: Ushuaia, Argentina

Day 2: Embarkation in Ushuaia

Day 3–4: At Sea – Drake Passage

Day 5–8: South Shetland Islands & Antarctic Peninsula

Day 9: Elephant Island

Day 10–11: At Sea

Day 12–15: South Georgia

Day 16–17: At Sea

Day 18–19: Falkland Islands

Day 20: At Sea

Day 21: Disembarkation in Ushuaia

Highlights

- Unspoiled and uninhabited wilderness, where the penguins, seals, whales, and seabirds are the true rulers
- Walk among thousands of King Penguins in South Georgia
- Watch elephant seals challenge each other for control of the beach
- Experience the White Continent and encounter an incredible variety of wildlife
- Take in the Sub-Antarctic South Shetland Islands and the spectacular Antarctic Peninsula
- Discover the top wildlife destination in the world where you can see penguins, seals, whales, and Albatross
- Admire breathtaking scenery such as icebergs, glaciated mountains, and volcanoes
- Visit the rugged Falkland Islands and the capital, Port Stanley
- Benefit from a variety of onboard activities including educational lectures on the history, geology, and ecology by the expedition team
- Enjoy the onboard amenities, including expedition lounge, restaurant, bar, pool, jacuzzi, library, gym, sun deck, spa facilities, and sauna
- Take advantage of optional activities during the voyage such as kayaking and snowshoeing



©Dennis Minty

©Dennis Minty



©Dennis Minty



©Dennis Minty



Itinerary

DAY 1: USHUAIA, ARGENTINA

On arrival at Ushuaia Airport, please make your way through to the Arrivals Hall where our representative will be waiting for you to transfer you to your hotel. They will be holding a sign with your name on it. Should you not be able to contact them, please refer to the front of your itinerary for emergency contact details of our representative office.

The first night of your voyage is spent in the quaint town of Ushuaia, the most southerly city in the world, and the capital of Tierra del Fuego (Land of Fire).

The remainder of the day is at leisure and you are free to explore, perhaps making a few last-minute purchases from the many shops or artisan markets or relaxing in a café. Visit the excellent museums along the main street, Avenida San Martín, or wander the streets and take in the town's dramatic setting, with views of the mountains to the north and the Beagle Channel to the south.

DAY 2: EMBARKATION IN USHUAIA

This morning is again free for you to explore Ushuaia further, or maybe discover Tierra del Fuego National Park, the most southerly national park of South America. The park offers

a range of hiking trails that lead you through the stunningly beautiful and dramatic scenery of snow-capped peaks, lush meadows, rugged coastline, glaciers, waterfalls and lakes. Look out for guanaco, Andean foxes, muskrats, and the North American beaver. Birds found here include the Andean Condor, Magellanic Oystercatcher, Kelp Goose, Austral Parakeet, and Torrent Duck.

Late this afternoon we transfer to the port of Ushuaia in time for embarkation on board the *Ocean Endeavour*. The Expedition Team and the Ship's Officers will be waiting to welcome you aboard.

This evening we sail along the wildlife-rich Beagle Channel, towards the White Continent of Antarctica. As we leave the lights of Ushuaia behind, look out for Magellanic Penguins, Rock Cormorants, Petrels, and Black-browed Albatross from the deck as well as noisy sea lion colonies.

DAY 3-4: AT SEA – DRAKE PASSAGE

The infamous Drake Passage, named after the famous English explorer, Sir Francis Drake, separates the tip of the Antarctic Peninsula from the southernmost tip of South America. It is unpredictable—often rough and

turbulent, but sometimes as calm as a lake—so be prepared!

Enjoy the fabulous onboard facilities: join a yoga class or attend a presentation or two given by the Expedition Team to prepare you for what lies ahead—from the geology of Antarctica to its history and wildlife, and even the ice!

Sailing towards Antarctica there is a fall in temperature as we cross the Antarctic Convergence and enter the waters of the Antarctic Ocean. The Antarctic Convergence is marked by an increased number of seabirds, whales, and other species that are attracted by the nutrient-rich waters pushed to the surface by the colder waters of the polar region flowing north and meeting the warmer equatorial waters flowing south.

Head out on deck to look for the mighty Albatross that fly overhead, scan the waters for breaching whales and icebergs, or gaze out from the panoramic windows of the observation deck.

We continue our course south and hope to make landfall by the evening of Day 4, depending on the weather conditions. Keep on the lookout for the first sighting of land—that heralds your arrival to the White Continent!



DAY 5-8: SOUTH SHETLAND ISLANDS AND ANTARCTIC PENINSULA

The next four days are spent exploring the South Shetland Islands and Antarctic Peninsula, a region that has captivated explorers for centuries and now enthralls travellers. We explore by Zodiac, cruising among the magnificently sculpted icebergs and making shore landings where we mingle with penguins, climb to vantage points to absorb the spectacular panoramic views, and maybe visit a scientific or historic base. There may even be opportunities to kayak and snowshoe and, of course, learn more about photography with one of our experts.

Antarctica will enchant you with its incredible scenery, from imposing glaciers to towering snow-capped peaks, vast icebergs, and ice-strewn channels. Not to mention the wildlife—from extensive colonies of Chinstrap, Gentoo and Adelie penguins, to crabeater, Weddell, fur and elephant seals, and a plethora of fascinating seabirds. Keep your eyes and ears peeled for the mighty crack of a glacier calving. Maybe you will be one of the brave few to take a polar plunge in the icy waters! Every day brings a new experience and new landing sites.

As we cruise from one landing site to the next, enjoy the continued lecture program and take in the scenery from the outer decks of the *Ocean Endeavour*. Make the most of the ship's health and fitness facilities, from the relaxing spa and saunas to the pool and gym.

DAY 9: ELEPHANT ISLAND

We leave the Antarctic Peninsula and the South Shetland Islands behind us as we chart a course for historic Elephant Island. If conditions permit, we will attempt to take the Zodiacs to Point Wild.



A penguin gets up close with a passenger

We always maintain a five metre distance from any wildlife, but in this case the curious penguin has chosen to move closer by itself.

©Dennis Minty

Elephant Island has its place firmly etched in polar history, as this is where Shackleton's crew from the 1914-17 Trans Antarctic Expedition took refuge when their ship, the *Endurance*, was crushed by pack ice in the Weddell Sea. They set up camp at Point Wild, a harsh and inhospitable place and waited for over four months, while Shackleton sailed with five other men in the *James Laird* lifeboat to South Georgia. This is one of the most incredible adventure stories and most heroic survival stories of all time.

DAY 10-11: AT SEA

Leaving Elephant Island, we chart a course northeast towards South Georgia. Spend time learning to identify the seabirds that follow in the wake of the ship or glide alongside including Albatross, Storm Petrels, Shearwaters, and Diving Petrels. Look out for whales and dolphins as you enjoy the silence of the sea.

Attend lectures and presentations by the Expedition Team as they prepare you for what lies ahead on South Georgia—from the history and geology to the incredible wildlife. Take in the panoramic views from the observation

lounge and spacious decks, or make the most of the onboard facilities that include a spa, saunas, saltwater pool, gym, and yoga classes.

If weather conditions are favourable, we hope to make landfall on South Georgia by late evening on day twelve.

DAY 12-15: SOUTH GEORGIA

South Georgia captivates every traveller that steps foot on its shores. Home to the greatest concentration of wildlife on the planet, here penguins number in the hundreds of thousands, blanketing beaches as far as the eye can see.

We spend three days exploring this stunningly beautiful island, an island that is not only overrun with an incredible array of fauna, but one that is steeped in history. South Georgia was an intrinsic part of Sir Ernest Shackleton's ill-fated *Endurance* expedition and was once the centre of the whaling industry.

South Georgia—known as the 'Galapagos of the South'—is home to over 30 million breeding birds, thousands of seals, the introduced Norwegian reindeer, nesting sites of the

Wandering Albatross, four breeding species of penguin, and the largest colony of King Penguins on the planet. If the wildlife is not enough of a draw card, the spectacular scenery against which it is set can only enhance your visit: emerald green bays, snow-covered peaks, and blue glacier ice.

We explore by Zodiac and kayak and on foot, with opportunities to learn more about photography from one of our expert guides.

Every day provides a different experience and a different location. Stand in awe amongst tens of thousands of penguins, look out across beaches carpeted with elephant seals, visit the remains of abandoned whaling stations, and even the grave of Shackleton himself.

DAY 16–17: AT SEA

Saying goodbye to the wildlife of South Georgia, we head west towards the isolated and sparsely populated Falklands archipelago, where the silence is broken only by the call of birds. Attend lectures and presentations by the Expedition Team, relax and unwind in the saunas and spa, and take advantage of all the other amenities on board.

DAY 18–19: FALKLAND ISLANDS

Have your camera at the ready as we approach the ruggedly beautiful Falklands archipelago to capture not only the abundant wildlife but also the incredible scenery.

Over the next couple of days we explore East and West Island by Zodiac and on foot as we make daily shore landings and maybe even discover smaller inlets by kayak.

Learn about the intriguing and controversial history of the Falkland Islands as we explore the quaint capital of Port Stanley, with its

British outpost feel. Near the town you may see Southern Giant Petrels, the endemic Falkland Steamer Ducks, Kelp Gulls, and Dolphin Gulls. There are also Black-crowned Night Herons, Red-backed Hawks, Peregrine Falcons, and Turkey Vultures.

As we explore the islands, look out for the five species of penguins found here, large populations of Black-browed Albatross, elephant and fur seals, Peale's and Commerson's dolphins, orcas, and a myriad of bird species including the Falkland's Flightless Steamer Duck, Imperial Shags, and Cobb's Wrens.



DAY 20: AT SEA

After our exploration of the Falkland Islands, we set sail on a course west, bound for the city of Ushuaia, the most southerly city in the world and the capital of Tierra del Fuego (Land of Fire).

DAY 21: DISEMBARKATION IN USHUAIA

We are scheduled to arrive into Ushuaia early this morning, and we disembark after a final breakfast aboard the *Ocean Endeavour*.

Please Note: You are advised not to book a flight out of Ushuaia before midday on disembarkation day, in case of delays caused by unfavourable weather conditions.

Antarctic Whale Journey

February 8–18, 2023

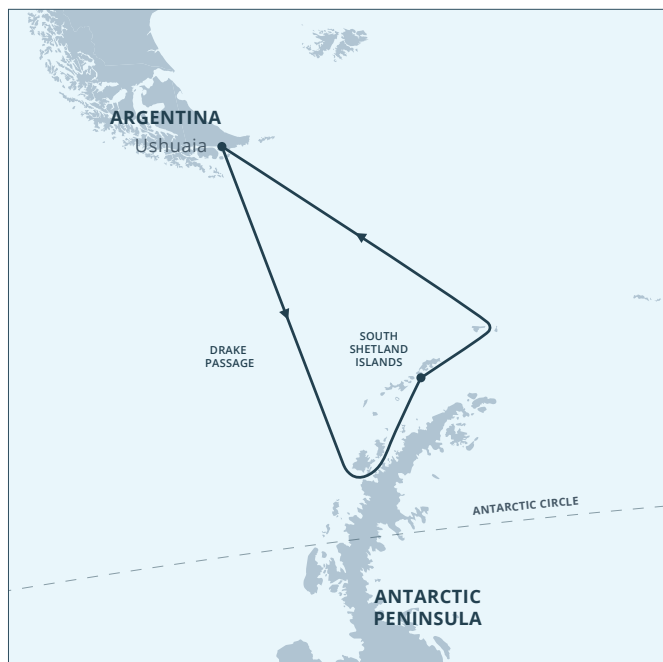
Starts: Ushuaia, Argentina

Ends: Ushuaia, Argentina

From **\$8,990** to **\$18,390** USD
per person (*details p.26*)

Aboard the *Ocean Endeavour*

No Charter Flights



Itinerary Map

Day 1: Ushuaia, Argentina

Day 2: Embarkation in Ushuaia

Day 3–4: At Sea – Drake Passage

Day 5–8: South Shetland Islands
& Antarctic Peninsula

Day 9–10: At Sea – Drake Passage

Day 11: Disembarkation in Ushuaia

Highlights

- Unspoiled and uninhabited wilderness, where the penguins, seals, whales, and seabirds are the true rulers
- Experience the White Continent and encounter an incredible variety of wildlife
- Take in the Sub-Antarctic South Shetland Islands and the spectacular Antarctic Peninsula
- Discover the top wildlife destination in the world where you can see penguins, seals, whales, and Albatross
- Admire breathtaking scenery such as icebergs, glaciated mountains, and volcanoes
- Enjoy regular zodiac excursions and onshore landings
- Benefit from a variety of onboard activities including educational lectures on the history, geology, and ecology by the expedition team
- Enjoy onboard amenities including expedition lounge, restaurant, bar, pool, jacuzzi, library, gym, sun deck, spa facilities, and sauna
- Take advantage of optional activities during the voyage such as kayaking and snowshoeing



©Dennis Minty



Itinerary

DAY 1: USHUAIA, ARGENTINA

On arrival at Ushuaia Airport, please make your way through to the Arrivals Hall where our representative will be waiting for you to transfer you to your hotel. They will be holding a sign with your name on it. Should you not be able to contact them, please refer to the front of your itinerary for emergency contact details of our representative office.

The first night of your voyage is spent in the quaint town of Ushuaia, the most southerly city in the world, and the capital of Tierra del Fuego (Land of Fire).

The remainder of the day is at leisure and you are free to explore, perhaps making a few last-minute purchases from the many shops or artisan markets or relaxing in a café. Visit the excellent museums along the main street, Avenida San Martín, or wander the streets and

take in the town's dramatic setting, with views of the mountains to the north and the Beagle Channel to the south.

DAY 2: EMBARKATION IN USHUAIA

This morning is again free for you to explore Ushuaia further, or maybe discover Tierra del Fuego National Park, the most southerly national park of South America. The park offers a range of hiking trails that lead you through the stunningly beautiful and dramatic scenery of snow-capped peaks, lush meadows, rugged coastline, glaciers, waterfalls, and lakes. Look out for guanaco, Andean foxes, muskrats, and the North American beaver. Birds found



here include the Andean Condor, Magellanic Oystercatcher, Kelp Goose, Austral Parakeet, and Torrent Duck.

Late this afternoon we transfer to the port of Ushuaia in time for embarkation on board the *Ocean Endeavour*. The Expedition Team and the Ship's Officers will be waiting to welcome us aboard.

This evening we sail along the wildlife-rich Beagle Channel, towards the White Continent of Antarctica. As we leave the lights of Ushuaia behind, look out for Magellanic Penguins, Rock Cormorants, Petrels, and Black-browed Albatross from the deck as well as noisy sea lion colonies.

DAY 3-4: AT SEA – DRAKE PASSAGE

The infamous Drake Passage, named after the famous English explorer, Sir Frances Drake, separates the tip of the Antarctic Peninsula from the southernmost tip of South America. It is unpredictable—often rough and turbulent, but sometimes as calm as a lake—so be prepared!

Enjoy the fabulous onboard facilities: join a yoga class or attend a presentation or two given by the Expedition Team to prepare you for what lies ahead—from the geology of Antarctica to its history and wildlife, and even the ice!

Sailing towards Antarctica there is a fall in temperature as we cross the Antarctic Convergence and enter the waters of the Antarctic Ocean. The Antarctic Convergence is marked by an increased number of seabirds, whales, and other species that are attracted by the nutrient-rich waters pushed to the surface by the colder waters of the polar region flowing north and meeting the warmer equatorial waters flowing south.





Head out on deck to look out for the mighty Albatross that fly overhead, scan the waters for breaching whales and icebergs, or gaze out from the panoramic windows of the observation deck.

We continue our course south and hope to make landfall by the evening of Day 4, depending on the weather conditions. Keep on the lookout for the first sighting of land—that heralds your arrival to the White Continent!

DAY 5–8: SOUTH SHETLAND ISLANDS AND ANTARCTIC PENINSULA

The next four days are spent exploring the South Shetland Islands and Antarctic Peninsula, a region that has captivated explorers for centuries and now enthralls travellers. We explore by Zodiac, cruising among the magnificently sculpted icebergs and making shore landings where we mingle with penguins, climb to vantage points to absorb the spectacular panoramic views, and maybe visit a scientific or historic base. There may even be opportunities to kayak and snowshoe and, of course, learn more about photography with one of our experts.

Antarctica will enchant you with its incredible scenery, from imposing glaciers to towering snow-capped peaks, vast icebergs, and ice-strewn channels. Not to mention the wildlife—from extensive colonies of Chinstrap, Gentoo and Adelie penguins, to crabeater, Weddell, fur and elephant seals, and a plethora of fascinating seabirds. Keep your eyes and ears

peeled for the mighty crack of a glacier calving. Maybe you will be one of the brave few to take a polar plunge in the icy waters! Every day brings a new experience and new landing sites.

As we cruise from one landing site to the next, enjoy the continued lecture program and take in the scenery from the outer decks of the *Ocean Endeavour*. Make the most of the ship's health and fitness facilities, from the relaxing spa and saunas to the pool and gym.

DAY 9–10: AT SEA – DRAKE PASSAGE

As we leave the Antarctic Peninsula behind, we take with us our memories and photographs. We set a course for the Drake Passage as we enjoy some final lectures and presentations and look out for wildlife from the observation lounge and the outer decks. Maybe you will make final use of the spa and sauna and saltwater pool.

Having crossed the Drake Passage once more, we enter the calm and tranquil waters of the Beagle Channel bound for Ushuaia.

DAY 11: DISEMBARKATION IN USHUAIA

We are scheduled to arrive into Ushuaia early this morning, and we disembark after a final breakfast aboard the *Ocean Endeavour*.

After saying our farewells to our Expedition Team and the *Ocean Endeavour* crew, we transfer you to the airport for your onward flight, or you may like to spend an extra few days in Ushuaia, giving you time to explore this fascinating town and the surrounding areas.

Please Note: You are advised not to book a flight out of Ushuaia before midday on disembarkation day, in case of delays caused by unfavourable weather conditions.



Journey to the Circle

February 17–March 2, 2023

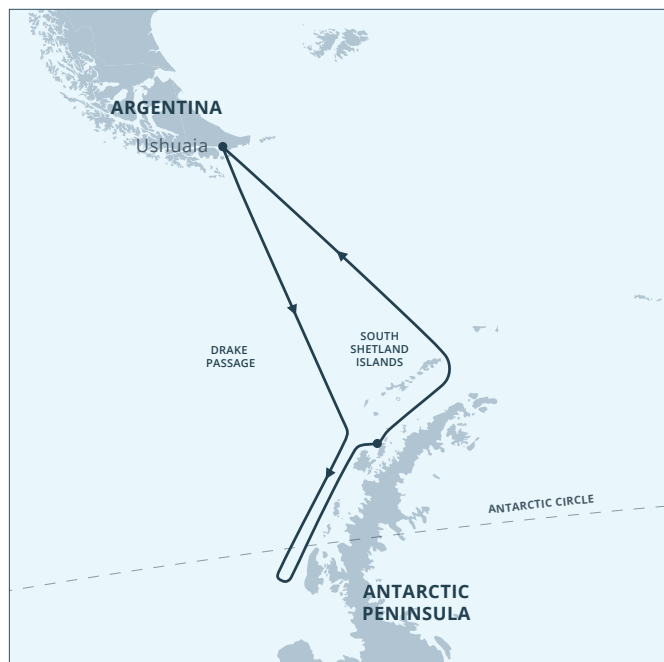
Starts: Ushuaia, Argentina

Ends: Ushuaia, Argentina

From **\$11,790** to **\$23,490** USD
per person (*details p.26*)

Aboard the *Ocean Endeavour*

No Charter Flights



Itinerary Map

Day 1: Ushuaia, Argentina

Day 2: Embarkation in Ushuaia

Day 3–4: At Sea – Drake Passage

Day 5–8: South Shetland Islands
& Antarctic Peninsula

Day 9–10: Antarctic Circle

Day 11: South Shetland Islands
& Antarctic Peninsula

Day 12–13: At Sea – Drake Passage

Day 14: Disembarkation in Ushuaia

Highlights

- Unspoiled and uninhabited wilderness, where the penguins, seals, whales, and seabirds are the true rulers
- Experience the White Continent and encounter an incredible variety of wildlife
- Cross the Antarctic Circle (if conditions allow)
- Take in the Sub-Antarctic South Shetland Islands and the spectacular Antarctic Peninsula
- Discover the top wildlife destination in the world where you can see penguins, seals, whales, and Albatross
- Admire breathtaking scenery such as icebergs, glaciated mountains, and volcanoes
- Enjoy regular Zodiac excursions and onshore landings
- Benefit from a variety of on-board activities including educational lectures on the history, geology, and ecology by the expedition team
- Enjoy onboard amenities, including expedition lounge, restaurant, bar, pool, jacuzzi, library, gym, sun deck, spa facilities, and sauna
- Take advantage of optional activities during the voyage such as kayaking and snowshoeing





Itinerary

DAY 1: USHUAIA, ARGENTINA

On arrival at Ushuaia Airport, please make your way through to the Arrivals Hall where our representative will be waiting for you to transfer you to your hotel. They will be holding a sign with your name on it. Should you not be able to contact them, please refer to the front of your itinerary for emergency contact details of our representative office.

The first night of your voyage is spent in the quaint town of Ushuaia, the most southerly city in the world, and the capital of Tierra del Fuego (Land of Fire).

The remainder of the day is at leisure and you are free to explore, perhaps making a few last-minute purchases from the many shops or artisan markets or relaxing in a café. Visit the excellent museums along the main street, Avenida San Martín, or wander the streets and take in the town's dramatic setting, with views of the mountains to the north and the Beagle Channel to the south.

DAY 2: EMBARKATION IN USHUAIA

This morning is again free for you to explore Ushuaia further, or maybe discover Tierra del Fuego National Park, the most southerly national park of South America. The park offers a range of hiking trails that lead you through the stunningly beautiful and dramatic scenery of snow-capped peaks, lush meadows, rugged coastline, glaciers, waterfalls, and lakes. Look out for guanaco, Andean foxes, muskrats, and the North American beaver. Birds found here include the Andean Condor, Magellanic Oystercatcher, Kelp Goose, Austral Parakeet, and Torrent Duck.

Late this afternoon we transfer to the port of Ushuaia in time for embarkation on board the *Ocean Endeavour*. The Expedition Team and the Ship's Officers will be waiting to welcome you aboard.

This evening we sail along the wildlife-rich Beagle Channel, towards the White Continent of Antarctica. As we leave the lights of Ushuaia

behind, look out for Magellanic Penguins, Rock Cormorants, Petrels, and Black-browed Albatross from the deck as well as noisy sea lion colonies.

DAY 3–4: AT SEA, CROSSING THE DRAKE PASSAGE

The infamous Drake Passage, named after the famous English explorer, Sir Frances Drake, separates the tip of the Antarctic Peninsula from the southernmost tip of South America. It is unpredictable—often rough and turbulent, but sometimes as calm as a lake—so be prepared!

Enjoy the fabulous onboard facilities: join a yoga class or attend a presentation or two given by the Expedition Team to prepare you for what lies ahead—from the geology of Antarctica to its history and wildlife, and even the ice!

Sailing towards Antarctica there is a fall in temperature as we cross the Antarctic Convergence and enter the waters of the Antarctic Ocean. The Antarctic Convergence is marked by an increased number of seabirds, whales, and other species that are attracted by the nutrient-rich waters pushed to the surface by the colder waters of the polar region flowing north and meeting the warmer equatorial waters flowing south.

Head out on deck to look out for the mighty Albatross that fly overhead, scan the waters for breaching whales and icebergs, or gaze

out from the panoramic windows of the observation deck.

We continue our course south and hope to make landfall by the evening of Day 4, depending on the weather conditions. Keep on the lookout for the first sighting of land—that heralds your arrival to the White Continent!

DAY 5–8: SOUTH SHETLAND ISLANDS AND ANTARCTIC PENINSULA

The next four days are spent exploring the South Shetland Islands and Antarctic Peninsula, a region that has captivated explorers for centuries and now enthralls travellers. We explore by Zodiac, cruising among the magnificently sculpted icebergs and making shore landings where we mingle with penguins, climb to vantage points to absorb the spectacular panoramic views, and maybe visit a scientific or historic base. There may even be opportunities to kayak and snowshoe and, of course, learn more about photography with one of our experts.

Antarctica will enchant you with its incredible scenery, from imposing glaciers to towering snow-capped peaks, vast icebergs, and ice-strewn channels. Not to mention the wildlife—from extensive colonies of Chinstrap, Gentoo and Adelie penguins, to crabeater, Weddell, fur and elephant seals, and a plethora of fascinating seabirds. Keep your eyes and ears peeled for the mighty crack of a glacier calving. Maybe you will be one of the brave few to take a polar plunge in the icy waters! Every day brings a new experience and new landing sites. As we cruise from one landing site to the next, enjoy the continued lecture program and take in the scenery from the outer decks of the *Ocean Endeavour*. Make the most of the ship's health and fitness facilities, from the relaxing spa and saunas to the pool and gym.





DAY 9–10: ANTARCTIC CIRCLE

Depending on the weather conditions, we will continue southwards in an attempt to reach latitude 66°33'S and cross the fabled Antarctic Circle. Our voyage south takes us past colossal, often beautifully sculpted icebergs, to a point on Earth only a few intrepid travellers have ever sailed. If we reach this momentous goal, we will toast the explorers who first ventured this far south and celebrate our own impressive achievement. This land is home to the midnight sun, shifting ice, and incredible ice formations. Weddell seals are found here, as are humpback whales and minke whales that feed on the krill-rich waters.

Weddell seals in particular are specially adapted to this icy environment, using their canines and incisors to rasp open new ice and maintain breathing holes in the ice. They also

have extremely accurate powers of navigation, enabling them to seek out breathing holes when their teeth are worn down and they are no longer able to maintain or create breathing holes.

DAY 11: SOUTH SHETLAND ISLANDS & ANTARCTIC PENINSULA

Having crossed the Antarctic Circle, we set a course north, exploring the Antarctic Peninsula and South Shetland Islands further by Zodiac and shore landings, scanning the waters for whales and seals and looking out for the seabirds that soar above the ship.

DAY 12–13: AT SEA – DRAKE PASSAGE

As we leave the Antarctic Peninsula behind, we take with us our memories and photographs. We set a course for the Drake Passage as we enjoy some final lectures and presentations and look out for wildlife from the observation lounge and the outer decks. There will be ample opportunity at this time to make final use of the spa, sauna, and saltwater pool. Having crossed the Drake Passage once more, we enter the calm and tranquil waters of the Beagle Channel bound for Ushuaia.

DAY 14: DISEMBARKATION IN USHUAIA

We are scheduled to arrive into Ushuaia early this morning, and disembark after a final breakfast aboard the *Ocean Endeavour*. After saying our farewells to our Expedition Team and the crew of the *Ocean Endeavour*, we transfer you to the airport for your onward flight. You may also choose to spend an extra day or two in Ushuaia, giving you time to explore this fascinating town and the surrounding areas.

Please Note: You are advised not to book a flight out of Ushuaia before midday on disembarkation day, in case of delays caused by unfavourable weather conditions.



SHIP

The *Ocean Endeavour*



©Michelle Valberg

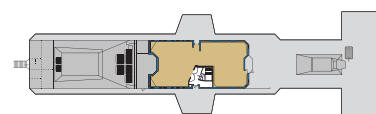
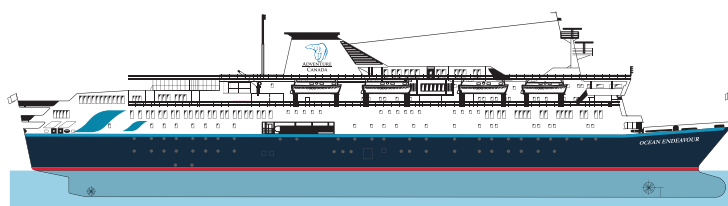
Capacity: 198 passengers

Length: 137 metres (450 ft.)

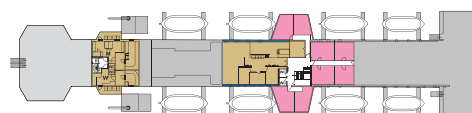
Registry: Bahamas

The *Ocean Endeavour* is the perfect vessel for expedition cruising. Outfitted with twenty Zodiacs, advanced navigation equipment, multiple lounges, and a top deck observation room, she is purpose-built for passenger experiences in remote environments. The *Ocean Endeavour* boasts a 1B ice class, enabling her to explore throughout the polar summers. Launched in 1982, she has had numerous upgrades, most recently in 2016.

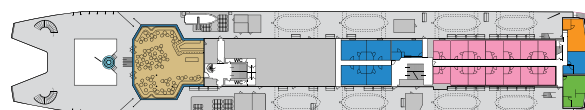
At 137 metres in length, the *Ocean Endeavour* has plenty of interior and exterior space. Ample deck space offers comfortable lounge chairs, a swimming pool, two saunas, and a hot tub. The spacious interior allows for varied workshops and presentations to occur simultaneously. The three lounges aboard the *Ocean Endeavour* are optimal locations for seminars, events, parties, and conversation.



DECK 9



DECK 8



DECK 7



DECK 6



DECK 5



DECK 4



● **CATEGORY 10** OWNER'S SUITE

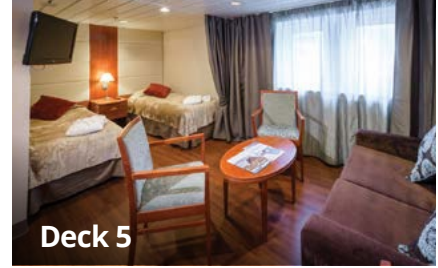
Deck seven: windows, matrimonial bed, TV, refrigerator, sitting area, private bathroom with bathtub—approx. 242–320 sq. ft.



Deck 5

● **CATEGORY 9** JUNIOR SUITE

Decks five & seven: bow or port-facing windows, matrimonial bed, TV, refrigerator, sitting area, private bathroom with bathtub—approx. 304–320 sq. ft.



Deck 5

● **CATEGORY 8** SUPERIOR

Decks five & seven: windows some with partially obscured views, two lower berths or matrimonial bed, TV, private bathroom, refrigerator—approx. 205 sq. ft.



● **CATEGORY 7** SELECT TWIN

Deck five: picture window, two lower berths, private bathroom, TV, separate living area with a pull-out sofa and refrigerator—approx. 145–190 sq. ft.



Deck 4

● **CATEGORY 6** COMFORT TWIN

Deck four: portholes or window (some partially obstructed), two lower berths, private bathroom, TV, some with separate living area with pull-out sofa bed, refrigerator—approx. 135–200 sq. ft.



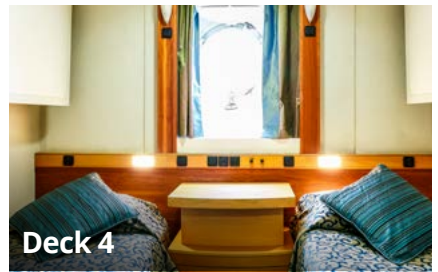
Deck 8

● **CATEGORY 5** TWIN WINDOW

Deck seven & eight: Picture window (partially or fully obstructed), two lower berths, refrigerator, private bathroom, TV—approx. 135–200 sq. ft.

● **CATEGORY 5A** SINGLE WINDOW

Deck seven & eight: Picture windows (partially or fully obstructed), two single or one double bed, refrigerator, private bathroom, TV—approx. 135–200 sq. ft.



Deck 4

● **CATEGORY 4** TWIN PORTHOLE

Deck four & five: Porthole or picture window, two lower berths, private bathroom, TV—approx. 90–105 sq. ft.

● **CATEGORY 4A**
SINGLE PORTHOLE

Deck four: Porthole window, two lower berths, private bathroom, TV—approx. 90 sq. ft.

● **CATEGORY 3** TWIN

Deck four: two lower berths, private bathroom, TV—approx. 95–105 sq. ft.

● **CATEGORY 2** TRIPLE INTERIOR

Deck four: three lower berths, one or two bathrooms, TV—approx. 225 sq. ft.

● **CATEGORY 1** SINGLE INTERIOR

Deck five: one lower berth, private bathroom, TV—approx. 95–105 sq. ft.



Expedition and Program Enhancements Prices

ALL PRICES ARE PER PERSON, IN US DOLLARS

Early Booking Bonus Available!

To learn about your saving options please contact us or your preferred travel advisor for more details.

EXPEDITIONS	DAYS	CABIN CLASS CATEGORIES											
		10	9	8	7	6	5A	5	4A	4	3	2	1
ANTARCTICA, SOUTH GEORGIA & FALKLANDS EXPLORER JAN. 20–FEB. 9, 2023	21	\$33,490	\$31,790	\$30,290	\$28,790	\$27,290	\$34,490	\$25,790	\$32,590	\$24,290	\$21,790	\$18,790	\$28,590
		No charter flights for this itinerary.											
ANTARCTIC WHALE JOURNEY FEB. 8–18, 2023	11	\$16,690	\$15,790	\$14,890	\$13,990	\$13,090	\$18,390	\$12,190	\$16,490	\$10,990	\$9,990	\$8,990	\$14,490
		No charter flights for this itinerary.											
JOURNEY TO THE CIRCLE FEB. 17–MARCH 2, 2023	14	\$22,190	\$20,790	\$19,590	\$18,390	\$17,190	\$23,490	\$15,990	\$21,790	\$14,790	\$13,790	\$11,790	\$18,790
		No charter flights for this itinerary.											

EXPEDITION COSTS INCLUDE:

*1 night hotel accommodation with breakfast in Ushuaia *Group transfer from hotel to pier *Shipboard accommodation *All meals on-board including snacks *All shore excursions and Zodiac cruising *Guiding and lectures by expedition team *English-speaking expedition team *Free use of rubber boots on land *Use of gym, sauna, pool, and on-board Jacuzzi *On-board yoga *Expedition Jacket (on-loan for duration of trip), inner layer jacket (to keep) *All port taxes *Transfer airport to hotel on Day 1 and pier to airport on day of disembarkation

EXPEDITION COSTS DO NOT INCLUDE:

*Airlines to/from embarkation and disembarkation city *Visa fees (if applicable) *Travel Insurance *Beverages (other than coffee and tea) *Personal expenses such as laundry, on-board communication (telephone calls, faxes, email service) *Gratuities for the crew (recommended US\$15.00 per person per day) *Optional activities (kayaking, camping, intensive photo course)

EXPEDITIONS	PROGRAM ENHANCEMENTS		
	KAYAKING	CAMPING	PHOTOGRAPHY
ANTARCTICA, SOUTH GEORGIA & FALKLANDS EXPLORER	\$1,299	\$399	\$1,299
ANTARCTIC WHALE JOURNEY	\$1,099	—	\$1,099
JOURNEY TO THE CIRCLE	\$1,299	—	\$1,299



TICO Reg# 4001400/5002 1860

As a registered Ontario company, we are licensed to sell travel packages through the Travel Industry Council of Ontario (TICO). Adventure Canada is required to keep all customer deposits in Client Trust Accounts and may only use the funds once the trip has begun, or to make a deposit to an operator on behalf of the client. Our Client Trust Accounts are subject to audit by a Chartered Professional Accountant (CPA) on an annual basis and are regularly inspected by TICO auditors.

Program Enhancements

Aboard the *Ocean Endeavour*

We're pleased to provide the following optional program enhancements to help you make the very most of every day—in your own way!

Kayaking PAID

From \$1,099 USD per person



Kayaking in the far-flung corners of the world is an experience guaranteed to refresh your soul. Paddling in small groups, you'll glide between ice floes, brash ice and icebergs dotted with wildlife. Previous kayaking experience is required. **Must sign up in advance.**

Snowshoeing PAID

Available for sign up on board only.

This is a unique way to explore Antarctica, allowing you to explore places others struggle to reach in boots alone.

Camping PAID

From \$399 USD per person

A true outdoor adventure, experience the sights and sounds during your opportunity to fully immerse yourself when you camp overnight in Antarctica. **Must sign up in advance.**

Photography Private Workshop PAID

From \$1,099 USD per person

Includes workshops prior to arrival in Antarctica, critiquing sessions while in Antarctica and editing workshops on the return journey. Select guided Zodiac excursions will be dedicated to photography, so you can learn from the best as you capture these dramatic landscapes. **Must sign up in advance.**



Hiking COMPLIMENTARY

Explore the surroundings by foot as you actively hike in Antarctica. Only available in some locations. Weather dependant.

Yoga COMPLIMENTARY

Experience yoga in a way like no other. On board the ship you will find yoga available to you. This is, however, weather and swell dependent.

