

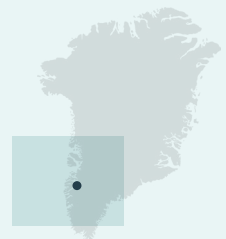


Photo: Mads Pihl

Kangerlussuaq

The sunniest settlement in Greenland

67°00'N 50°41'W



Kangerlussuaq serves as the gateway to the Greenland ice cap as well as to the rest of the world.

The majority of Kangerlussuaq residents of Kangerlussuaq work in the tourism industry or at the airport, which is the main hub for flights in Greenland. Kangerlussuaq, also known as Søndre Strømfjord or Søndy, was built as a US Air base during WW2 and functioned until the end of the Cold War. Kangerlussuaq also hosts most of the scientific studies done in Greenland and is very close to the UNESCO World Heritage site: Aasivissuit Nipisat, a site known for 4500 years of Inuit hunting grounds from the Ice cap to the Sea.

This place has many beautiful and unique places to discover. The Arctic Circle Trail, the ice cap, a big population of reindeer and musk ox, glaciers and even Greenland's longest road. A tour on the Ice Road brings you to either the breathtakingly beautiful Russell Glaciers or the 2nd biggest ice cap on earth. The road trip is full of adventures and takes around 4 hours in total.

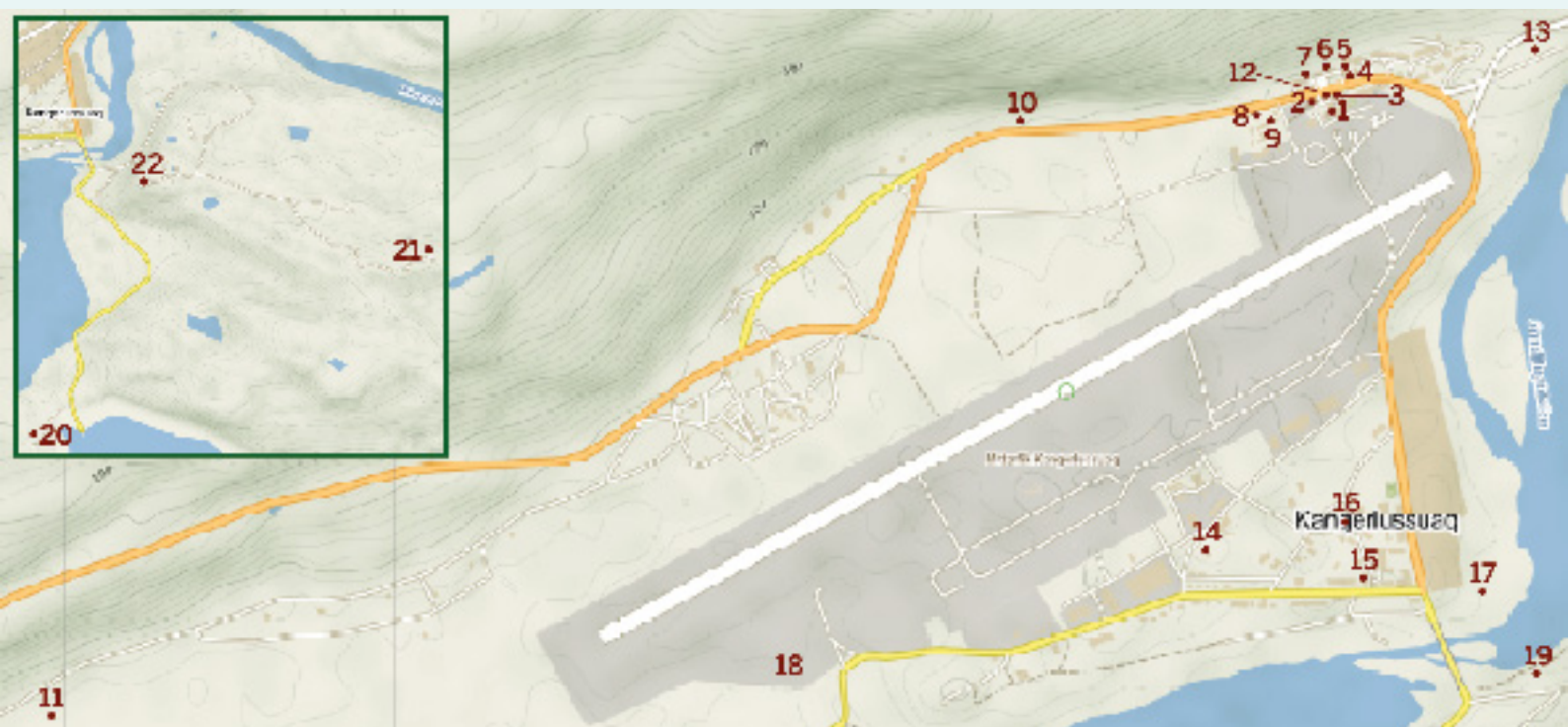
Tips for you:

- The settlement offers you a great opportunity to go sightseeing to different viewpoints and points of interests close to the airport.

- We do not have a tradition of bargaining and we sell our products at the same price to any customer all year long.
- WIFI is available at the airport for a reasonable price.
- Kangerlussuaq has local operators offering short tours in and around the settlement, it is really easy to get close to nature and wildlife here.
- Musk ox wool is of the highest quality, a very sustainable material and it is an ecofriendly product. It's also a good alternative to people with arthritis because of the silky softness of the wool.
- The designs and techniques of Greenlandic arts and crafts vary across the country, so do not expect to find the exact same selection of items in other towns. The pieces you find here are unique and more than just souvenirs. They are household items used in any Greenlandic home.
- You can book a local operator to take you to the Greenlandic sled dogs, take a taxi, or take the bus and get off by the old hospital and walk 15 minutes, or hike 45min from the airport.

Guidelines

- Please ask before photographing locals; some of us are camera shy. And please do not go to resident's backyards, especially near the camping place.
- Our dogs are beautiful and curious but please do not feed them or touch them. They are one of the purest dog races and closely related to the wolf. They are for work, not play or petting. The dogs are fenced, so please don't put your hands though the fence.
- Beware of traffic when you walk around town. Walk on the right side of the road.
- Shop and eat locally to experience our culture up close, while supporting our community.
- The locals use sustainable and local meat like the muskox or reindeer.
- The settlement has rich wildlife. Please show respect for the animals and keep a good distance.
- Leave only footprints behind, then we won't have to deal with our ancient spirits.



Places to go

- | | |
|--|-------------------------------|
| 1. Airport | 11. Fossil plain |
| 2. Isbutik (Ice store) | 12. Vivis Shop (Souvenirshop) |
| 3. Niviarsiaq (Musk Ox wool shop) | 13. Viewpoint |
| 4. By Heart (Musk Ox wool & Greenlandic artwork) | 14. Museum |
| 5. Butik Sara | 15. Church |
| 6. Tele Post Center (Post office) | 16. Kang Mini Marked |
| 7. Pilersuisoq (grocery store) | 17. Viewpoint |
| 8. Police Office | 18. Dog yard |
| 9. Polar Lodge (Souvenirshop) | 19. Viewpoint |
| 10. View Point, 10 min | 20. Roklubben (Restaurant) |
| | 21. Tacan Viewpoint |
| | 22. Blackridge Viewpoint |



Photo: Aningaaq R. Carlsen, Visit Greenland

Sisimiut

The adventure destination of Greenland

66°56'N 53°40'W



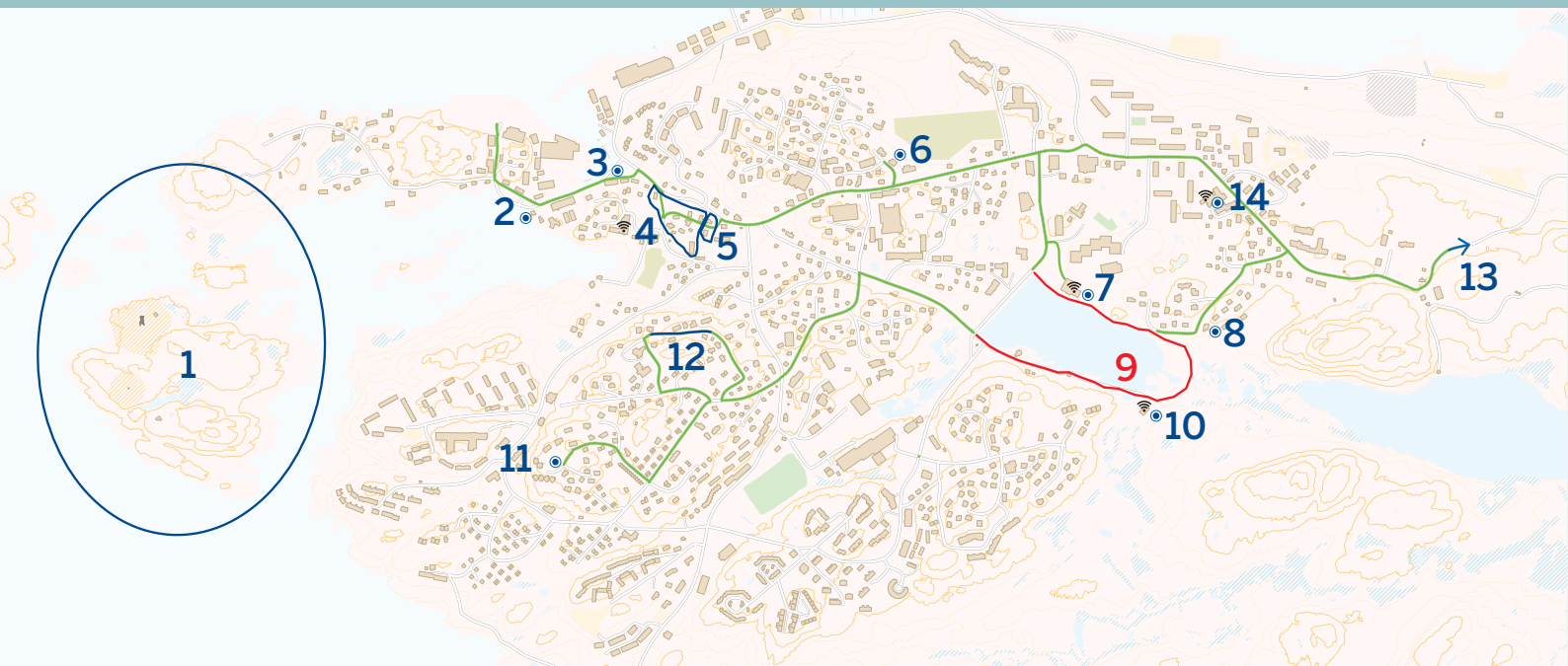
Sisimiut is known for its will to do things its own way. It is the second largest town in Greenland with approximately 5,500 citizens. The town and its surrounding area have a rich history and boast archaeological ruins dating back more than 4,000 years. We are the adventure hub.

Sisimiut is where Greenland's most famous hiking route, the Arctic Circle Trail between Sisimiut and Kangerlussuaq, begins. People have travelled the route from the coast to the hinterlands for thousands of years, which is why an area south of Sisimiut has earned a place on the UNESCO World Heritage list.

Half of all snowmobiles in Greenland are registered here, and we have more ATVs than any other town – simply because we live on the edge of the biggest back country in Greenland. Similarly, the number of boats per capita is among the highest in the world. We are the southernmost location with a tradition of dogsledding, and you will find most of our sled dogs on the outskirts of town in an area locally known as “Dog City”.

Our tips for you:

- Public conveniences in town are few and far between. We advise you take advantage of the facilities on board before you disembark. Otherwise, please do not hesitate to ask for the restroom at any public building or private business.
- We do not have a tradition of bargaining but sell our products at the same price to any customer all year long.
- Our Arts & Crafts workshop is of the highest standard, and you will not meet any other Greenlandic workshop with a larger selection.
- The designs and techniques of Greenlandic arts and crafts vary across the country, so do not expect to find the exact same selection of items in other towns. The pieces you find here are unique and more than just souvenirs. They are household items used in any Greenlandic home.
- The old town center, now Sisimiut Museum, is very well preserved and maintains a historical atmosphere. Remember to take a photo of the iconic whale bone gate and learn more about our history and culture.
- Sisimiut has local boat operators offering short boat trips to different key sites nearby. Check the information board at the harbor.
- WIFI is available at several places for a reasonable price.



Places to go

1. Sallinguit "Teleøen" (Historical sites, 4000 year old ruins)
2. Kayak club
3. Arts & Craft workshop
4. Sisimiut museum
5. Qiviut (Musk Ox wool shop)
6. J/S Tiggaliorkfik (Local baker with the known 'Ribbensandwich')
7. Taseralik (Cultural house of Sisimiut)
8. Panigiit (Local sewing shop)
9. Walk the love circle/walk of love/the love trail
10. Café Naapiffik (Greenlandic café, with free wifi)
11. Nasiffik viewpoint over UNESCO & the Arctic Circle
12. Simuup Aqq view point over the harbor and cruise ship
13. Dog City & Arctic Circle Trail, only a 30 minute walk from the harbor
14. Restaurant Nasaasaq and Hotel Sisimut Greenlandic seafood, Wifi and gift shop.

Guidelines

- Please ask before photographing locals; some of us are camera shy.
- Our snowmobiles and dogsleds are cool and photogenic. You are welcome to take pictures but please do not touch them.
- Our dogs are beautiful and engaging but please do not feed them or get too close. They are for work, not play or petting.
- Beware of traffic when you walk around town. Please use the sidewalk whenever available.
- Leave only footprints behind, then we won't have to deal with our ancient spirits.
- Shop and eat locally to experience our culture up close, while supporting our community and traditions.
- Our beautiful atmospheric museum area is a must-see for any visitor. Please remember that entry into the buildings requires a ticket.
- You will find many historical and archaeological remains in and around Sisimiut. Enjoy our past from a respectful distance.
- The harbour is a busy and bustling part of town. Please be careful and, for your own safety, stay out of the way of people working.
- Most shops in Sisimiut take foreign cards and an ATM is available at GrønlandsBanken in the town center. Some places also accept foreign currencies (Euro and US dollars).
- Our shops are very aware of export laws:
 - No restriction for export with products made of Musk Ox, Reindeer and Seal to EU.
 - CITES permit is required for export of Walrus, Beluga and Minke whale from West Greenland. You can easily obtain CITES at all the places that sell these products.



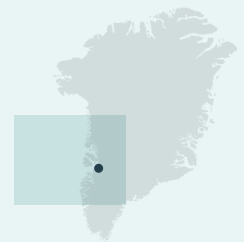


Photo: Aningaaq R. Carlsen, Visit Greenland

Ilulissat

The iceberg capital of Greenland

69°13'N 51°05'W



Ilulissat is a town of around 4700 people, right at the mouth of the UNESCO Icefjord, called Kangia in Greenlandic.

The UNESCO area was established in 2004. Almost every visitor follows the wooden walkway all the way down to the Icefjord and the nationally protected area, Sermermiut. Ilulissat has for many years been the biggest tourism hotspot in Greenland.

The town is traditionally a fishing town - and it still is today, with halibut being the preferred catch in the area. Located 250 km north of the Arctic Circle, the town sees no sun over the horizon from the 26th of November until the 13th of January. It also has midnight sun from the 21st of May until the 24th of July.



Photos: Asbjørn D. Bargsteen/Avannaata Kommunia



**Avannaata
Kommunia**

Guidelines created with input from locals living in Ilulissat.
Designed by Avannaata Kommunia and AECO.
Contact: explore@avannaata.gl

www.avannaata.gl

Guidelines

- Our nature is beautiful and fragile, please respect the untouched.
- When hiking in nature, please use the trails, we take great care of our nature.
- Please keep the silence in Sermermiut and use the wooden walkway.
- The icebergs are beautiful, but also very dangerous, keep a safe distance to the shore.
- Please help keep beautiful Ilulissat clean, use waste bins.
- Be curious about what the dogs are fed and how to behave around them.
- Greenlandic dogs are not pets; they are working animals. Please do not feed or pet them. Use the same rules for puppies as adult dogs.
- Please respect the dog areas and respect the moving dogsleds. Keep a distance of 5 meters or more.
- Please respect local people, their customs, privacy, and their private property. Ask permission to take photos, both of adults and children.
- The locals have stories everywhere you look. So, if you want to hear these, talk to the locals and use local businesses.
- We may not always understand your language, but please use facial expressions, hand gestures and body language to communicate with us.
- Please use our local tourism actors and the tourism information office.
- Buy local products, this is how you give the most back to the community.
- Respect religious and protected buildings and areas.
- Never enter a private home without an invitation.
- Be careful on busy roads. You share it with both cars and other pedestrians.
- The harbour is a workplace and space is limited. Take care and give space to those who work there.





Photo: Bruno Cazarini, Silversea Cruises

Pond Inlet

Where the modern meets the traditional

72°42'N 077°57'W



The Inuktitut name for our community is Mittimatalik, which has two competing origin stories. Some of us think it means “the landing place”, referring to a large rock on which ‘seagulls used to alight and from which they used to fish’. Others believe it means “place where Mittima is buried”. No one knows who Mittima was or where he came from.

General Description

Thule have lived on the northern tip of Baffin Island through periods known to archaeologists as pre-Dorset, Dorset, Thule, and modern Inuit. Our ancestors lived in sealskin tents (tupiit) in the summer and igloos (iglavigait) or sod huts roofed with skins and moss (qarngmait) in the winter. You can see a recreation of an Iglavigait in our community today. To see an igloo, you'll have to come back in the winter.

Two centuries of continued contact with Europeans has brought us to the present-day, where we now live in modern houses and enjoy modern amenities. We still retain aspects of our traditional lifestyle and our heritage has a significant and meaningful impact on our day-to-day lives. The wilderness is our grocery store and today we still hunt, eat and use parts from seal, narwhal, geese, walrus, bowhead whales, foxes, caribou, and polar bears.



Photo: Ann E. Lennert

Items of Interest

- In the 1820s British whaling vessels began to hunt bowhead whales in the area. Just over a century later, in 1921, the Hudson's Bay Company established a post within the present day boundaries of the community.
- In 1960 our community was home to only around fifty people. Today there are around 1700 of us, approximately 95% of whom are Inuit.
- Pond Inlet receives 24 hours of sunshine from May 5th to August 7th
- From mid-November to mid-January, there is no sun, just starlight, moonlight, and the Northern Lights reflecting off the ice and snow, with an average temperature of -40°C.
- We refer to ourselves as Tununirmiut, which is thought to mean “people of the shaded place” or Mittimatalingmiut, meaning “people of Mittimatalik.”

Guidelines

1. Welcome to Mittimatalik. We encourage you to explore our community, but please respect our privacy, our belongings, and our homes and yards. Treat us the way you wish to be treated in your community and in your home.
2. We invite you to take pictures of our beautiful scenery and our community, but please ask permission before taking pictures of us, our children or our homes.
3. We encourage you to hear our stories, so come with an open mind to learn about where and how we live. We are proud of our hunting traditions and of our use of local food sources. Wildlife products and subsistence harvesting are central to our culture. With this in mind, you may see harvesting activities taking place. Keep in mind that these animals have lived free and wild and we only take what we need.
4. Please respect that illegal substances and alcohol should not be brought into our community nor exchanged for local products or other items.
5. Inuit sled dogs are an important resource for our hunters and outfitters, so while we encourage you to observe our dog teams please do so at a respectful distance. Please do not interfere with the dogs while they are being fed or approach the owners when they are working with their teams, unless you are especially invited to do so.
6. We invite you to visit our grocery stores but remember that it takes a lot of effort to fill our shelves. Fresh items are only re-supplied once a week, weather and flights permitting. Please purchase only what you truly need.
7. Be generous and give proper value for locally made arts and crafts. Make sure you know whether or not you can bring wildlife products such as sealskin, bone or ivory back to your own country. If you can – please see what we create. Pond Inlet has several nationally famous and sought after artists who produce work for galleries in Toronto, Montreal and Vancouver.
8. The standard exchange rate for USD to CAD at our community store is 1 to 1. Please try to pay in CAD if you can, if not, we'll accept USD at a 1 to 1 rate.
9. We can provide a maximum of 10 minutes of wifi at the library, which is located in our Visitor Centre. Please respect this time limit as our wifi resources are limited.
10. We want you to have a safe visit to Pond Inlet. With that in mind, avoid walking in the middle of the road just as you would at home. We are busy going about our days and yes, we do drive. Local vehicles are not taxis unless otherwise arranged for your visit.
11. While many people under 40 understand English well, our language is strong and healthy here and we are immensely proud of this. We encourage you to try a few words in Inuktitut. We apologize, but we will not be able to understand German, French or Russian. Luckily smiles are universal.
12. We say 'yes' with our eyebrows and 'no' with our nose. If we don't respond verbally, that doesn't mean we are ignoring you.
13. If you venture away from the community, enjoy our scenery and local fauna, but remember that our stones and cultural treasures are not souvenirs, they are part of our ancient history. Please leave them where they belong.
14. We have a young, growing population and our children are curious and fun-loving. Please don't be alarmed if you see our youth playing outside unsupervised. We are a tight knit community and this is normal - especially in the long days of the Arctic summer!
15. Hear our stories and listen to them with an open mind. If you want, share your stories too! Let's embrace our differences and our similarities.



Photo: Denis Elterman, Silversea Cruises

Our ancestors lived in igloos or sod huts roofed with skins and moss in the winter.



Photo: Denis Elterman, Silversea Cruises

Avoid walking in the middle of the road just as you would at home.



Points of Interest

- | | |
|--------------------------------------|-----------------------------------|
| 1. Anglican Cemetery | 8. Traditional Qammaq |
| 2. Catholic Cemetery | 9. St. Timothy Anglican Church |
| 3. Old Anglican Minister's Residence | 10. Sirmilik National Park Office |
| 4. Old Freezer | 11. Nattinak Visitor Centre |
| 5. Air Strip | 12. Tununiq Sauniq Co-Op |
| 6. Wildlife Office | 13. Ulaqjuk Elementary School |
| 7. Northern Store | 14. Pond Inlet Hamlet |



Photo: Bruno Cazarini, Silversea Cruises

We are proud of our hunting traditions and of our use of local food sources. Wildlife products and subsistence harvesting are central to our culture.



Photo: Bruno Cazarini, Silversea Cruises

We invite you to visit our grocery stores but please purchase only what you truly need.