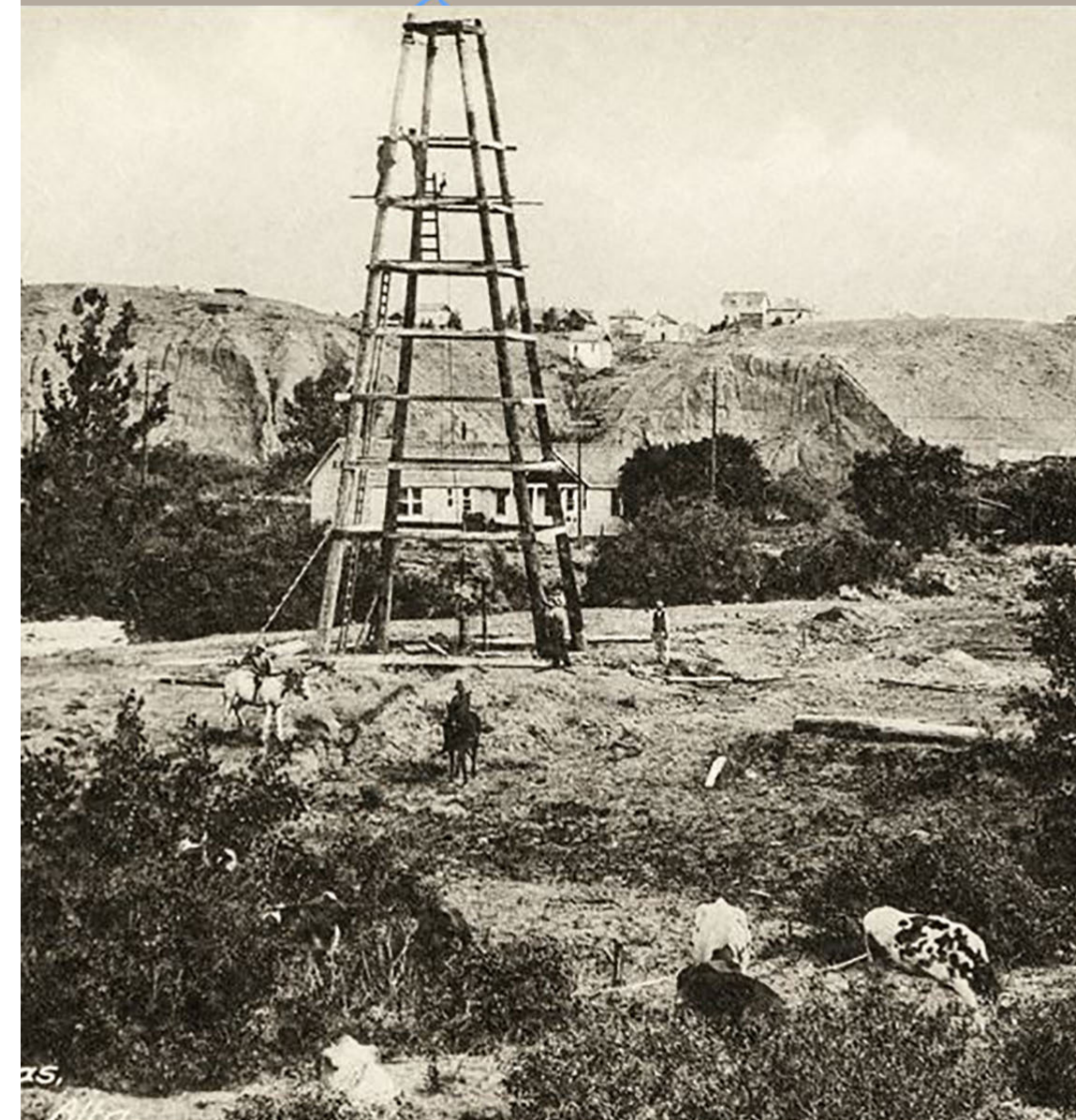


how we've grown.

1900

population 1,500*



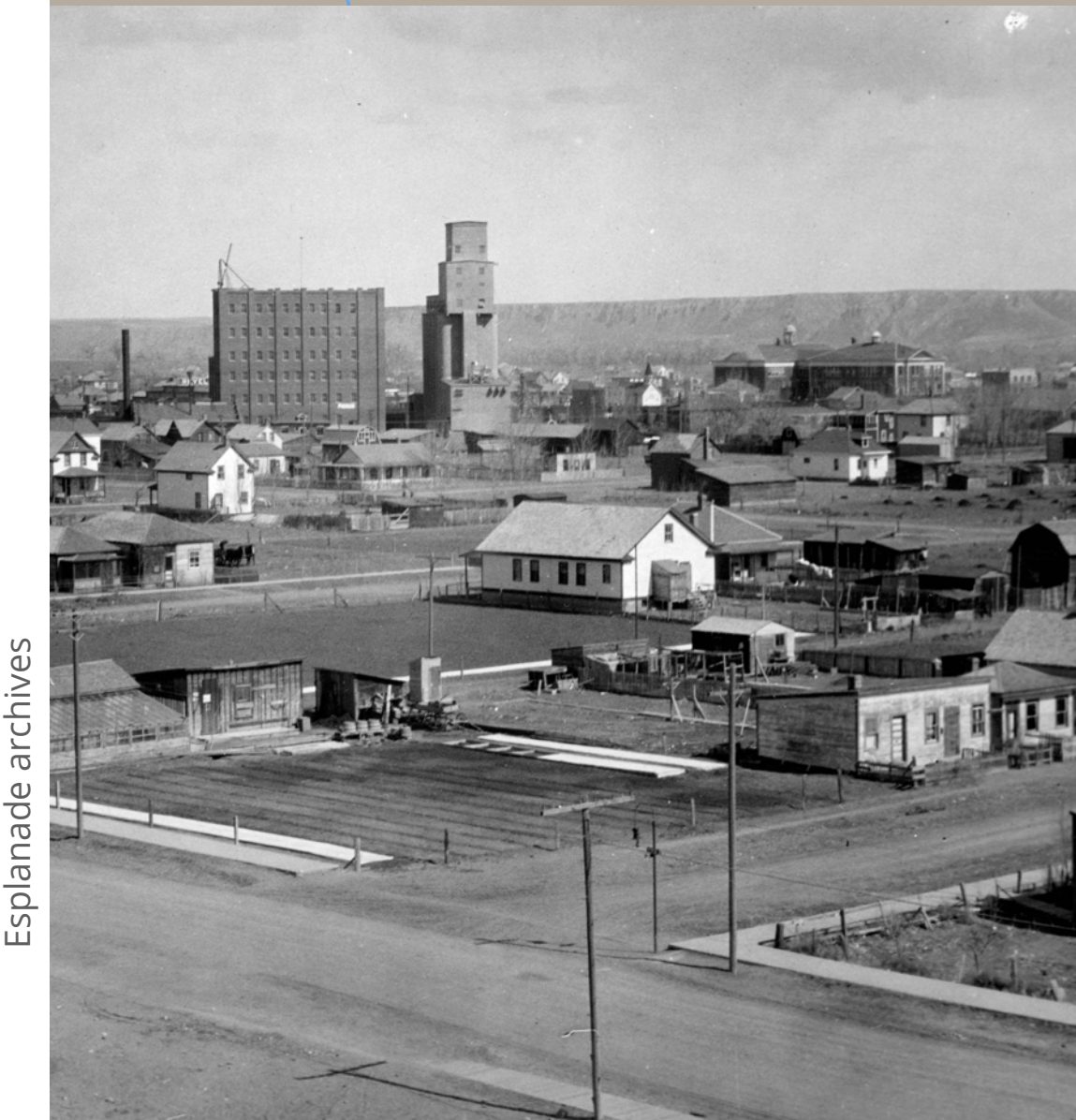
Early drilling for natural gas, c.1905.

1900's Machine Age

- Early settlers build homes & businesses
- Development is clustered near railway and river
- First gas street lamps are installed
- 1905: Alberta becomes a province
- ① 1906: CPR Station is constructed
- ② 1908: Finlay Bridge is completed

1930

population 10,500*



View of the Flats, circa 1930.

1930's Interwar Period

- Difficult economic times during the Great Depression
- ① 1933: City celebrates Golden Jubilee
- ② 1937: Hycroft China begins operations
- 1939: King George VI and Queen Elizabeth visit Medicine Hat
- 1939: Canada enters World War II

1960

population 23,172



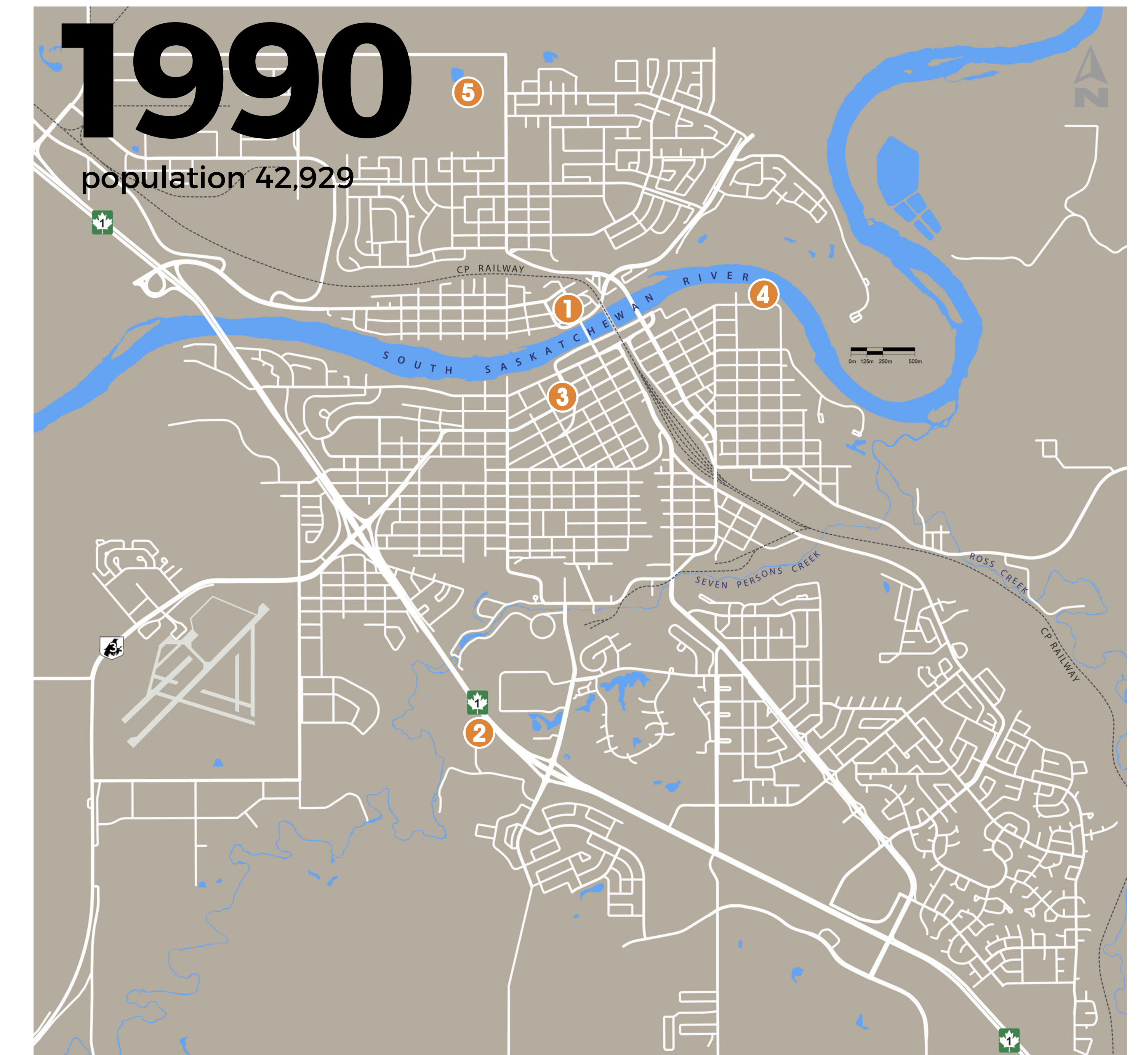
Cruising downtown in 1961.

1960's Cold War Era

- ① 1960: Goodyear tire plant opens
- ② Kin Coulee Park is completed
- ③ Improvements are made to Airport
- ④ 1962: Allowance Avenue overpass built
- ⑤ 1965: MH College has its beginnings
- Development expands outward from core towards new hospital & highway

1990

population 42,929



Volleyball at Spectrum in 1992.

1990's Information Age

- ① 1990 - St. Patrick's Church becomes National Historic Site
- ② 1991 - Saamis Tepee is erected
- ③ 1990/91 - Provincial building relocates downtown
- ④ 1995: Major river flood event
- ⑤ 1999 - Family Leisure Centre opens
- First Jazz Fest and Spectrum Festival



2019

population (2016) 63,260

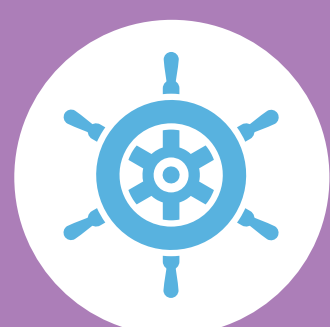


Medicine Hat Mall expansion, 2017.

2000-2019

- 1 2000 - Medicine Hat Clay Industries becomes a National Historic Site
- 2 2005 - Esplanade opens
- 3 2014 - Wind farm begins operating
- 4 2015 - Canalta Centre opens
- 5 2018 - Major expansion to Hospital
- 6 2018 - World-scale cannabis facilities announce upcoming openings

forward to 2050.



A sustainable future.

By the year 2050, Medicine Hat will be home to about 90,000 people. To accommodate our growth and to support Medicine Hat's evolution to a sustainable, livable and efficient city, a new **Municipal Development Plan** is being drafted.

By consulting with Hatters for the past couple of years, we have received a wide variety of perspectives on the future. The new plan, **myMH**, incorporates this feedback to help create a roadmap for Medicine Hat's future. Thanks for your help!



Available to view in early 2020.

myMH will be released for public viewing and comments in early 2020. It will not only address upcoming challenges, but help ensure a city that works well for everyone. There might even be some exciting surprises! Please watch for announcements at:

shapeyourcity.medicinehat.ca

how do you fit in?



Public input is helping to create this plan.

During 2018-2019, we reached out to the general community and stakeholders for their thoughts. Now those values and ideas, along with other important considerations, are being incorporated into the **myMH** plan.

Ingredients of an MDP



PROJECT TIMELINE

